

Frequently Asked Questions MA2100cwf



Table of Contents

My MA2100cwfx displays “Check toner/Low toner”	3
How do I check the Toner Level on my MA2100cwfx?	5
How do I access the Command Center RX webpage?	7
What is the administrator login via the MA2100cwfx OP Panel?	8
Where is the Serial Number located for the MA2100cwfx?	8
How do I install the Windows Print Driver for my MA2100cwfx?	9
My MA2100cwfx has poor image quality	14
My MA2100cwfx displays an error indication	15
My MA2100cwfx does not turn on	17
My MA2100cwfx has a message on the display that a Paper Jam has occurred. Also, there is a flashing Attention light	18
Setting the Connection by Using the Wi-Fi Setup Tool (Microsoft Windows)	26
Wireless Connection setup by Using Wi-Fi Direct	34
When trying to access the Command Center web page on my MA2100cwfx it states, “incorrect login Username or Password”	45
How can I print onto “Special Media” such as Envelopes or Labels on my MA2100cwfx?	46
Installing the Apple OS print driver	48
Installing Kyocera Quick Scan Utility. For USB and network connected devices ..	59
Using Kyocera Quick Scan Utility. For USB and network connected device	64



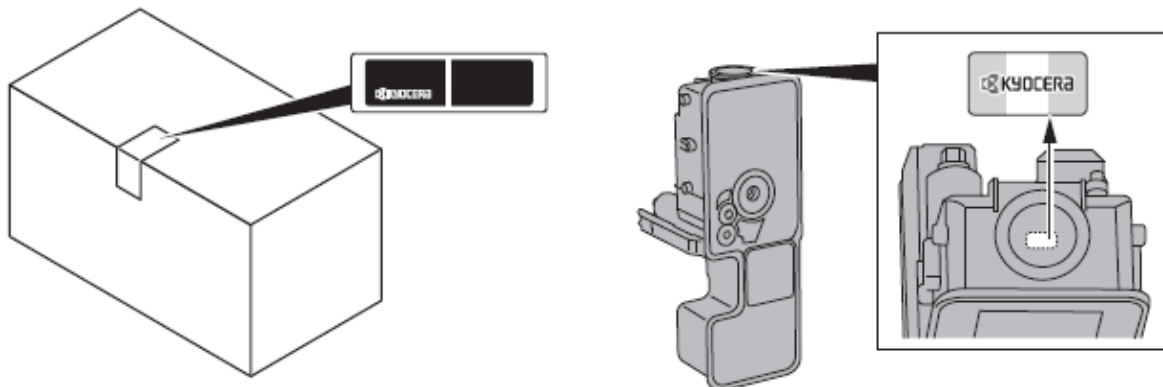
My MA2100cwf displays “Check toner/Low toner”

Check to ensure the toner is Genuine Kyocera Toner. You can do this by checking if the toner has the Kyocera Hologram on the toner bottle.

To maintain quality, we recommend using genuine Kyocera toner containers, which must pass numerous quality inspections.

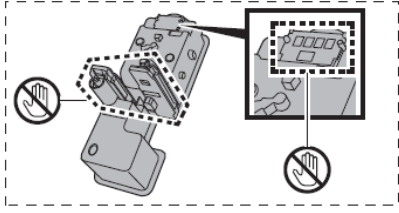
The use of non-genuine toner containers may cause failure. We will not be liable for any damages caused by the use of third party supplies in this machine.

A label is affixed to our genuine supplies, as shown below.

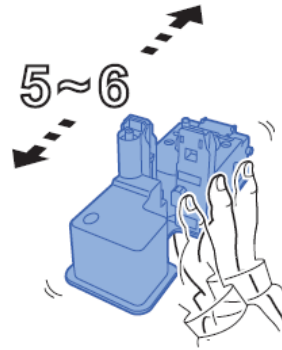


Remove the toner container and shake it using caution not to touch the areas shown, re-install the toner container.

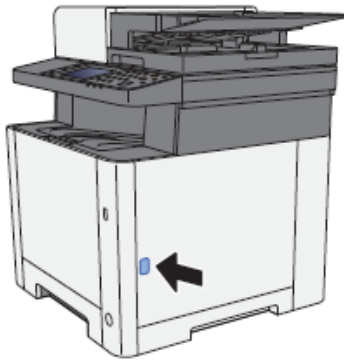
Do not touch these areas shown.



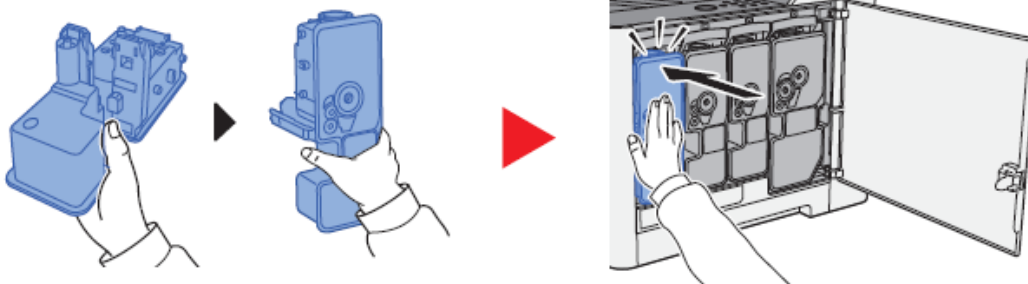
Shake the toner container.



Make sure the Right Cover is closed all the way.



Make sure the toner is installed in the printer correctly.



How do I check the Toner Level on my MA2100cwfxf?

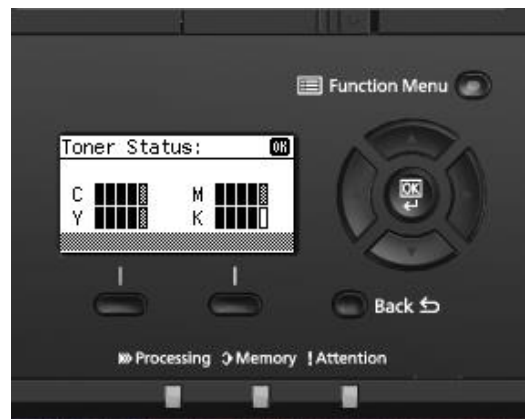
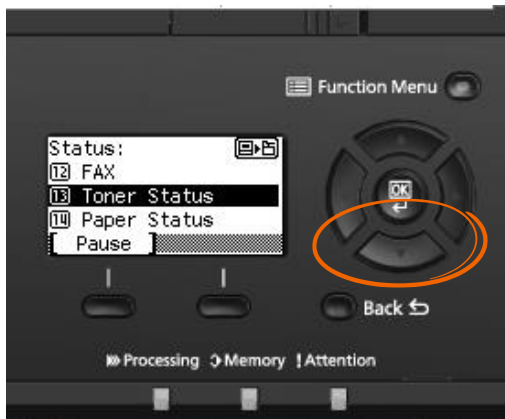
The Toner Gauges can be checked on the display.

Press the [**Status / Job Cancel**] key.



Scroll down using the down arrow key to highlight [**Toner Status**], Press OK to select.

The toner levels will be displayed.

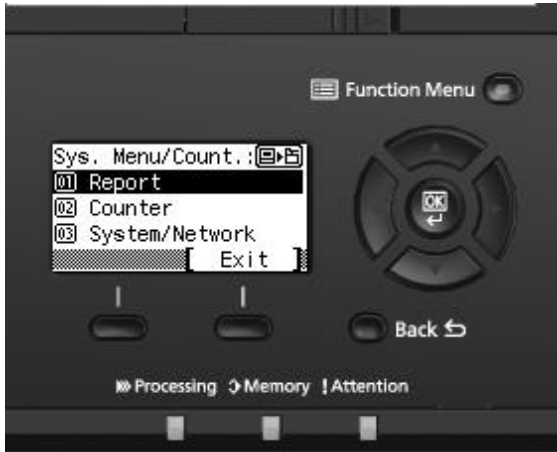


The toner gauges can also be found on the printer Status Page.

Press the [**System Menu / Counter**] key.



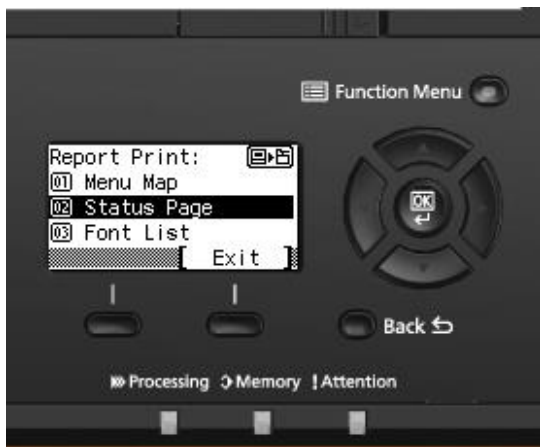
Select [**Report**] Press OK.



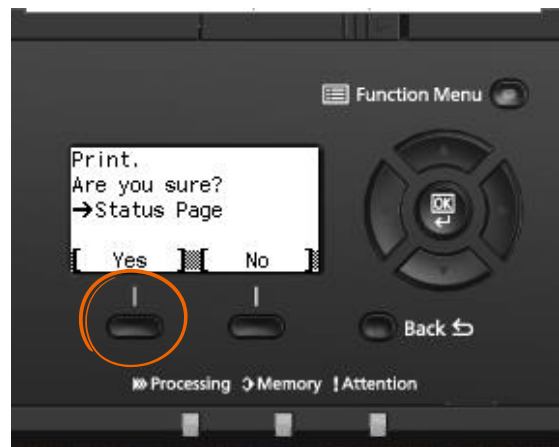
Select [**Report Print**] press OK.



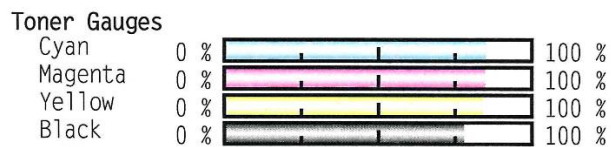
Scroll down to highlight [**Status Page**] Press OK.



Select **Yes**.



Check Toner Gauges at the bottom of the page.



How do I access the Command Center RX webpage?

(Command Center is not available with USB Cable connected devices).

Print the Status Page to get the TCP IP address for the printer.

Press the [**System Menu / Counter**] key > Select [**Report**] > Select [**Report Print**] > Select [**Status Page**].

Look for the heading of Network on left column of the printed Status Page.

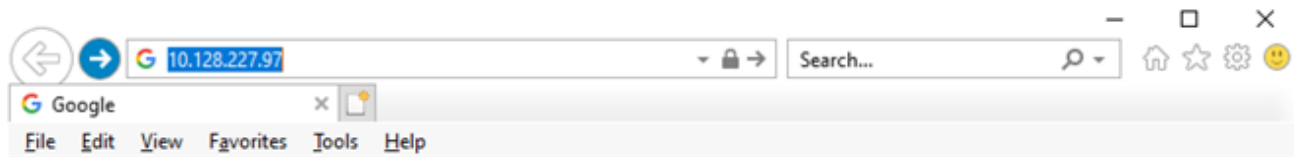
Below Network look for IPv4.

Look for the IP Address on the third line down.

```
IPv4
DHCPv4 Status:      Enabled
Bonjour Status:     Enabled
IP Address:         192.168.168.71
Subnet Mask:        255.255.255.0
Default Gateway:    192.168.168.1
```

Open a Web Browser such as Internet Explorer then delete the text in the Address Field.

Key in the IP address obtained from the Status Page then press Enter.



The default login is

Username: **Admin** (capital A)

Password: **Admin** (capital A)

A screenshot of the Kyocera Command Center RX web interface. The interface is in English and shows the following sections:

- Admin Login:** Fields for User Name (Admin) and Password (Admin), with a Login button.
- Device Status:** A table showing the status of the printer and status message.
- Paper:** A table showing paper levels for Cassettes and MP Trays.
- Toner:** A table showing toner levels for Black, Cyan, Magenta, and Yellow.

What is the administrator login via the MA2100cwfxf OP Panel?

Username: **2100**

Password: **2100**

Where is the Serial Number located for the MA2100cwfxf?

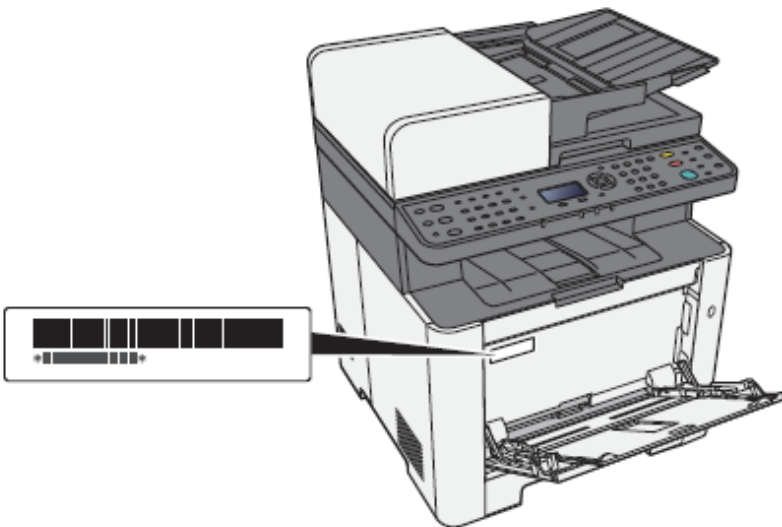
Open the Multi-Purpose Tray to find the Serial Number.

It will be a white label that looks like a barcode.

Note: The serial # is also located in the upper right corner on the printed status page.

Checking the Equipment's Serial Number.

The equipment's serial number is printed in the location shown in the figure.



You'll need the equipment's serial number when contacting your Service Representative. Please check the number before contacting your Service Representative.

How do I install the Windows Print Driver for my MA2100cwfxf?

Supported operating systems:

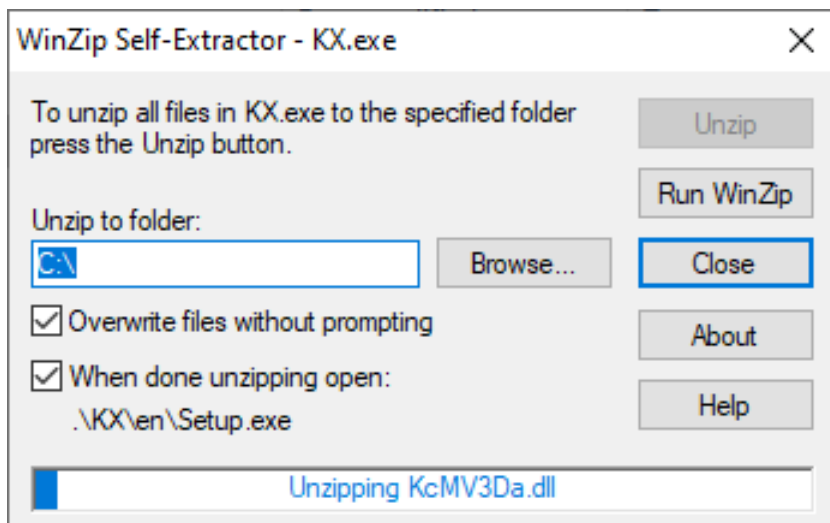
Windows 11	Windows 10	Windows 8.1
Windows Server 2019, 2022	Windows Server 2016	Windows Server 2012 R2
Windows Server 2012		

Note: If you install the driver in unsupported operating systems including Windows 7, Windows Server 2008 R2, and Windows Server 2008, a security message appears. To proceed with the installation, allow the installer to make changes to your computer. For more information on Microsoft Windows support policy, go to the Microsoft Support website.

The KX Print Driver can be downloaded from:

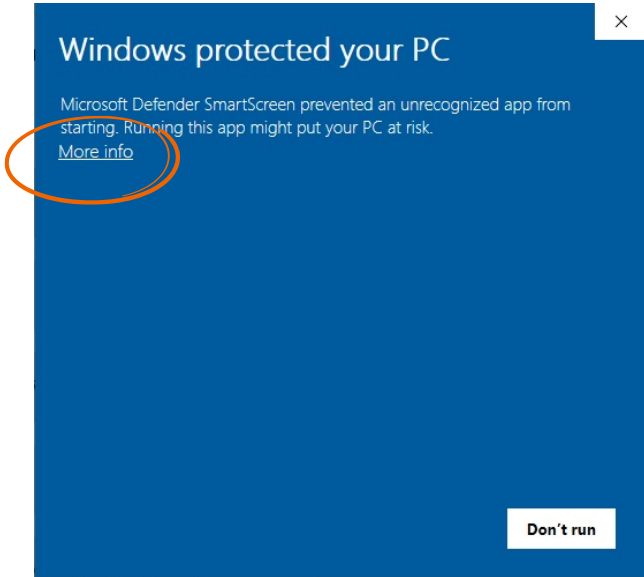
<https://www.kyoceradocumentsolutions.us/ma2100cwfxf>

Once downloaded, double click on the exe file to start the installation. The driver installation files will extract to a folder on the C drive.



When the extraction completes, Windows Defender may prompt an unrecognized app is starting. Click More Info.

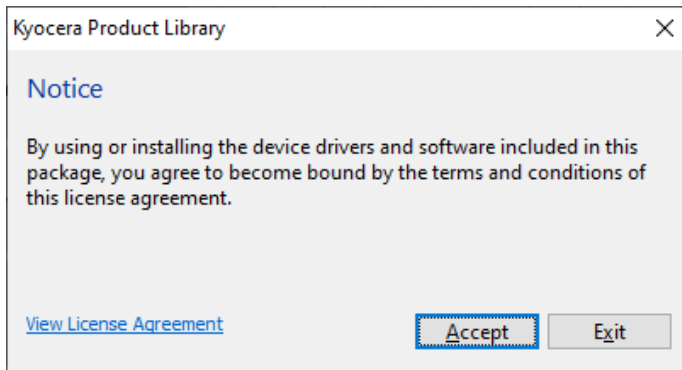
Then select Run Anyway.



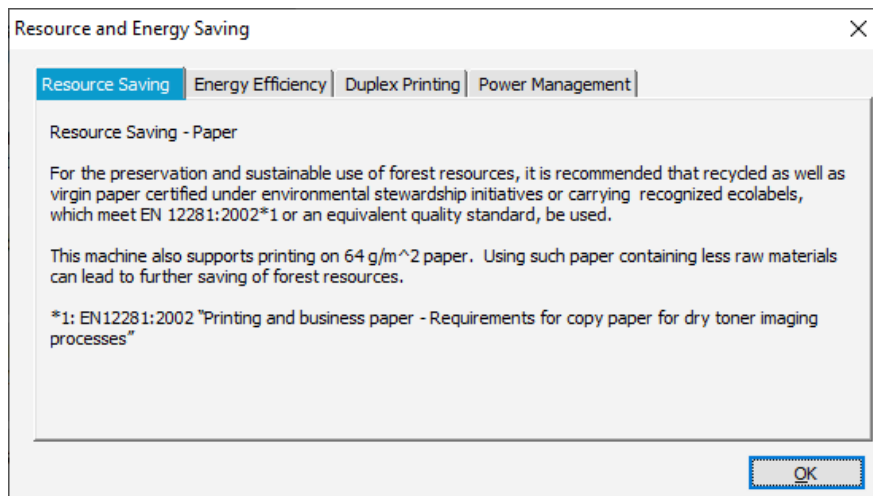
The Kyocera Product Library will open.



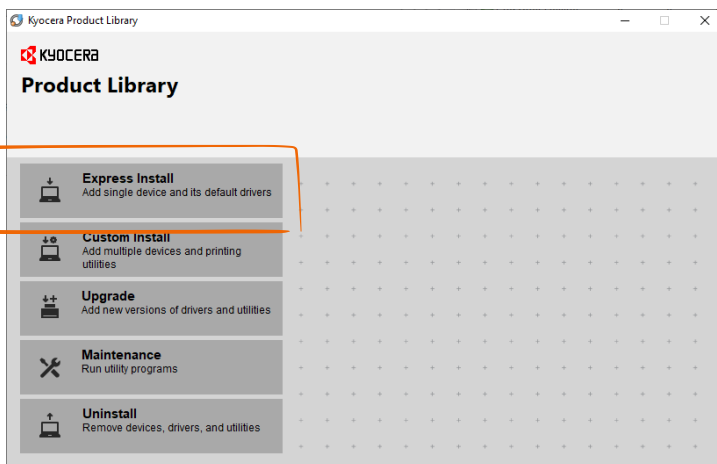
Accept the License Agreement.



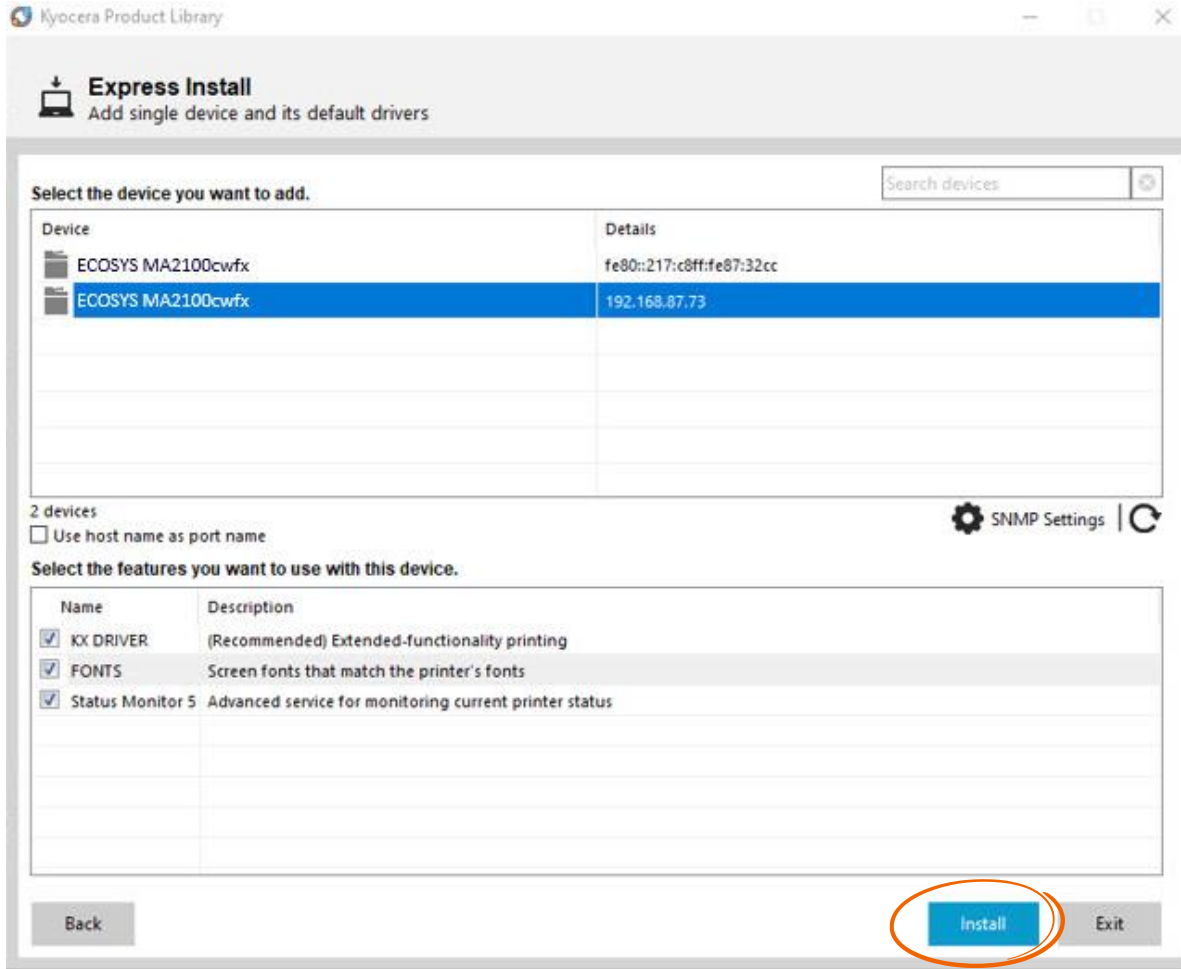
Acknowledge the Energy Star Compliance notification by clicking OK.



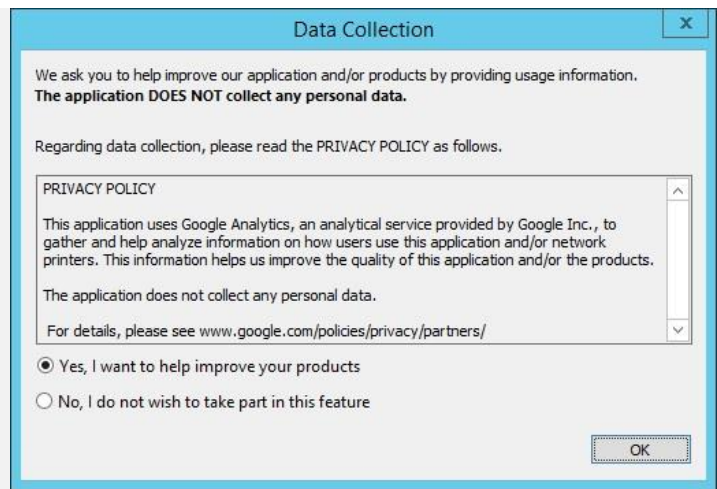
In the menu on the left select Express Install.



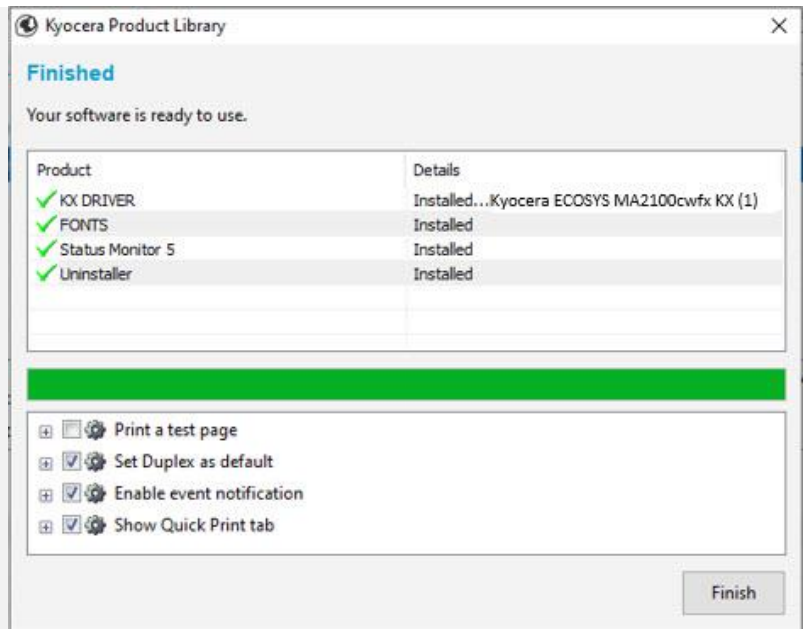
In Express mode, the installer will search the network and USB connections for any Kyocera devices. Click on the printer to highlight it and click Install.



Select Yes to allow the driver to report issues to Kyocera in the event of an issue. If you do not wish to allow the reporting, select No.

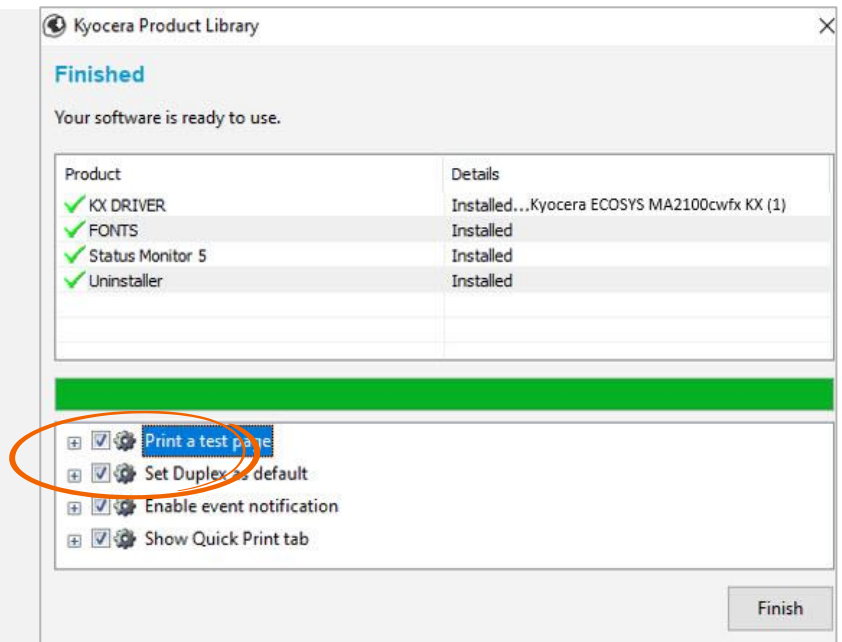


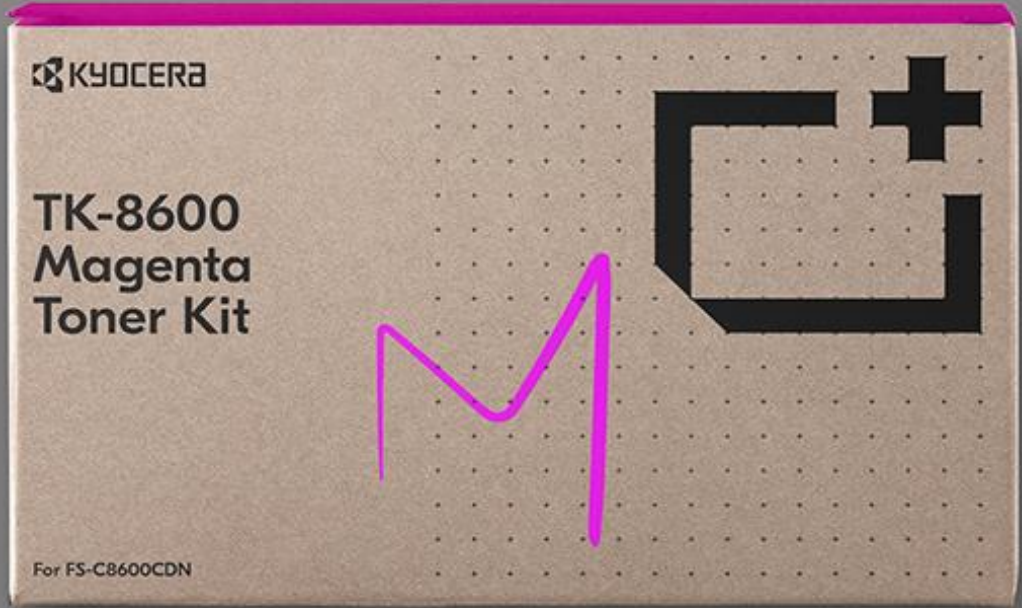
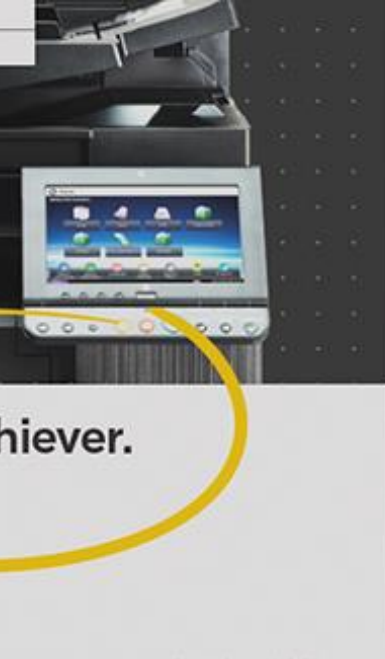
The Product Library will start installing the selected driver and components.



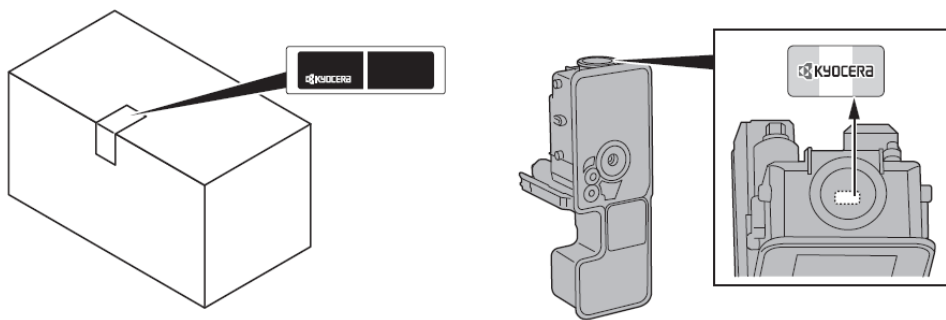
Once complete, select the check box to Print A Test Page.

Please note that for Energy Star Compliance, Duplex is enabled by default.





My MA2100cwfxf has poor image quality



- Replace the paper with new paper.
- Shake the toner container from side to side several times.
- Disable **Eco Print** mode. **System Menu > Common Settings > Function default > Eco Print > turn off**
- Make sure the paper type setting is correct for the paper being used.
- Select the **System Menu / Counter** key > **Adjust/Maintenance > Service Setting > Drum Refresh > Start.**
- Select the **System Menu / Counter** key > **Adjust/Maintenance > Service Setting > Laser Scanner Cleaning > Start.**
- Select the **System Menu / Counter** key > **Adjust/Maintenance > Service Setting > DEV-CLN > Start.**

My MA2100cwfxf displays an error indication

If an error occurs on the machine, the error message appears on the screen. Also, the Attention indicator on the operation panel will light up or flash.

How can I find information if an error occurs?

When **[Help]** is displayed on the message display, select **[Help]** to display the Help screen. The Help screen shows machine operation.

Select the **[▼]** key to display the next step or select the **[▲]** key to display the previous step. Select the **[OK]** key to exit the Help screen.



How can I wake the machine up from Sleeping?

Answer: Pressing the **[Energy Saver]** key will wake the machine from a sleep state.



What does a blinking Processing light mean?

The **[Processing]** light blinks during print processing or when an error occurs.



What does a blinking Attention light mean?

The [**Attention**] indicator lights up or blinks when an error occurs, or a job is stopped.



Why do I get a “Add Paper to MP Tray” message when I send a print job?

The media type or size selection in the print job does not match the media or size in the printer. Verify that the media and size selected in the print driver matches the media and size in the cassette.

Why does the printer show Offline when connected USB?

This is likely a communication issue. Use another USB port on the PC or another USB cable.



My MA2100cwfxf does not turn on

Make sure to fully press in the white main power button located on the lower right side of the front of the printer.



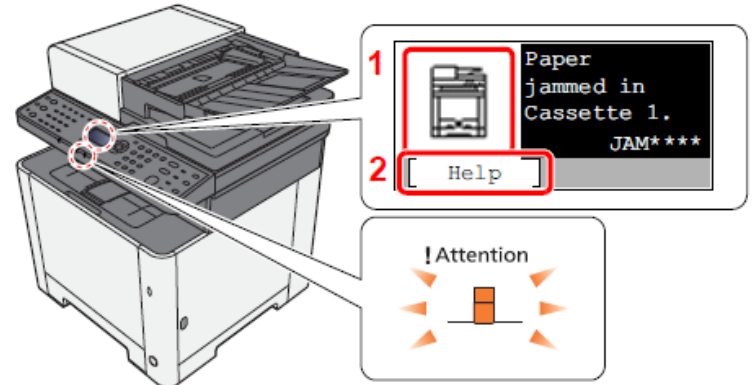
Check that the power cord that came with the printer is fully inserted in the rear of the unit.

Confirm the printer is plugged into a working outlet. Try plugging in another device to see if it powers on.

Try a different power cord if available.

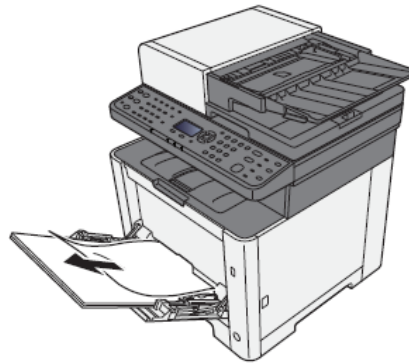
My MA2100cwfxf has a message on the display that a Paper Jam has occurred. Also, there is a flashing Attention light

The first step is to determine the paper jam location. Take a look at the message on the Printer display. Reference the images below and follow the steps outlined to clear the jammed paper.

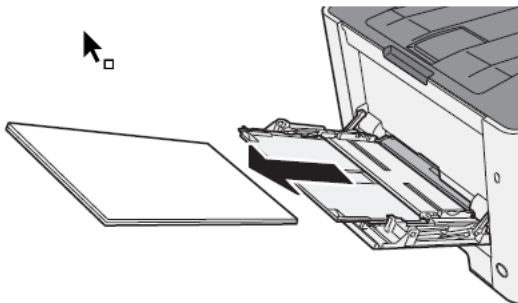


Paper Jam at the MP Tray

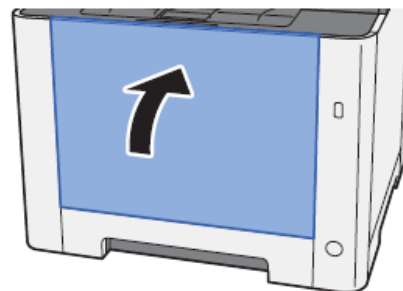
Remove any jammed paper. Do not reuse jammed papers. If the paper tears during removal, be sure to remove any loose scraps of paper from inside the machine. Scraps of paper left in the machine could cause subsequent jamming.



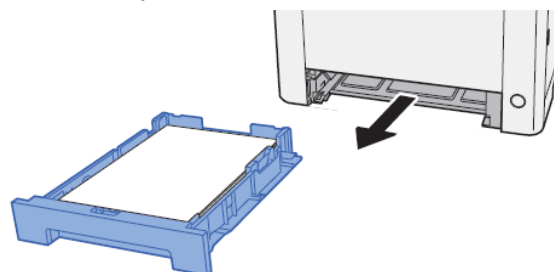
Remove all the paper.



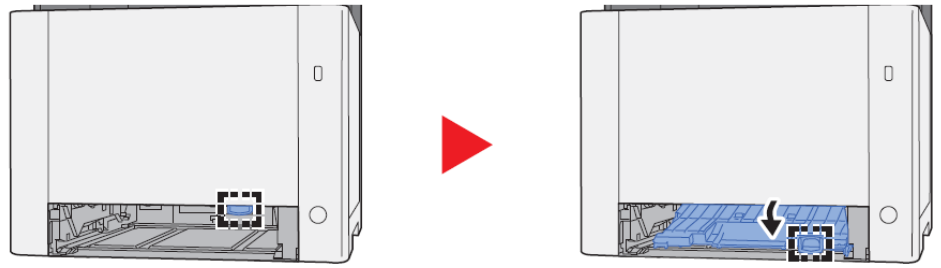
Push the multipurpose tray to close it.



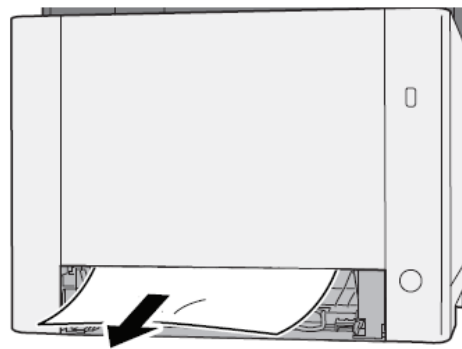
Pull Cassette 1 out toward you until it stops.



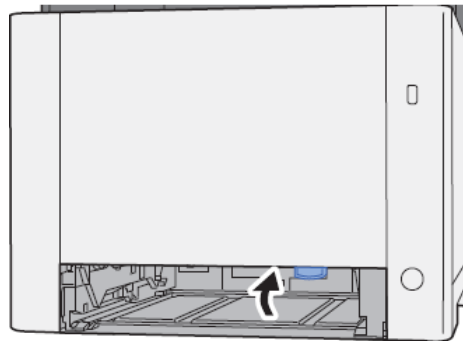
Open Duplex Feed Cover.



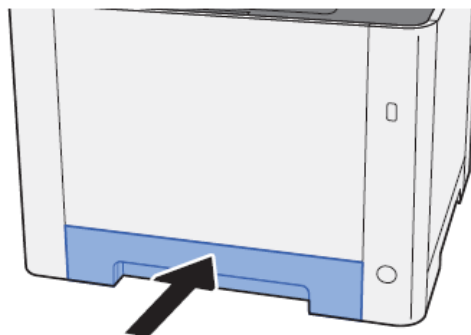
Remove any jammed paper.



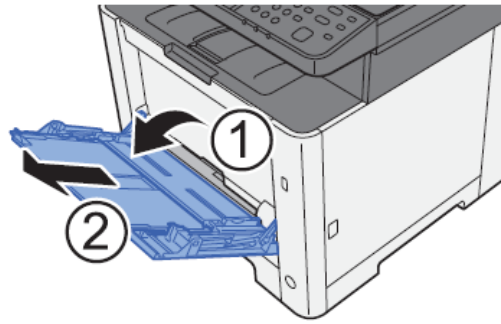
Push Feed Cover back in.



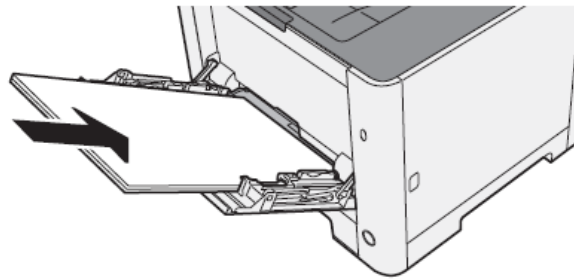
Push Cassette 1 back in.



Open the multipurpose tray.

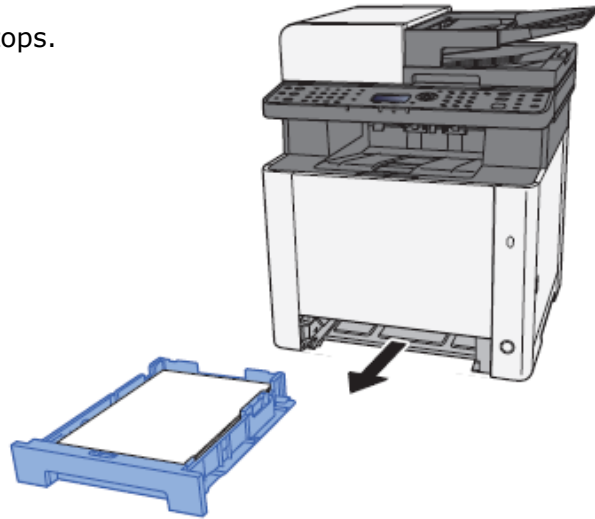


Reload the paper.

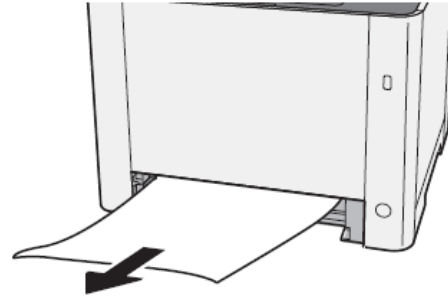


Paper Jam at the Cassette

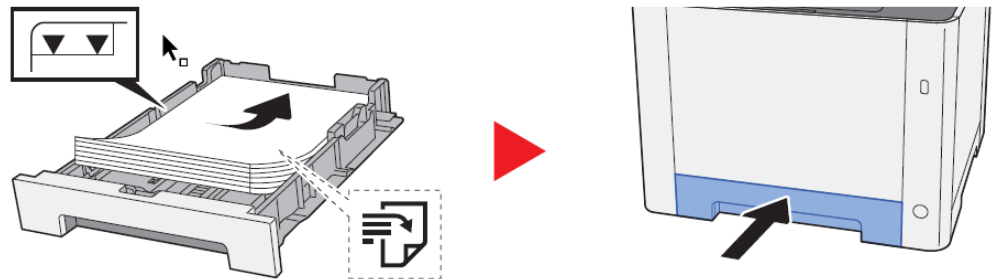
Pull Cassette 1 out toward you until it stops.



Remove any jammed paper. Do not reuse the jammed papers. If the paper tears during removal, be sure to remove any loose scraps of paper from inside the machine. Scraps of paper left in the device could cause subsequent jamming.

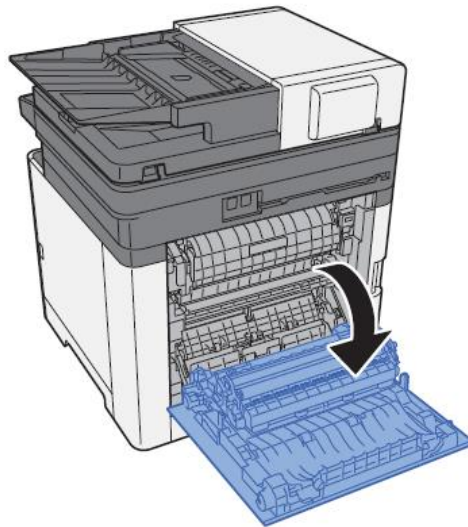


Push Cassette 1 back in.

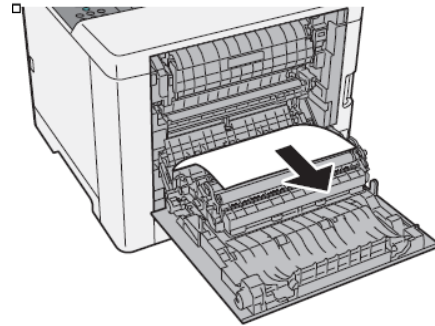


Paper Jam at Rear Cover

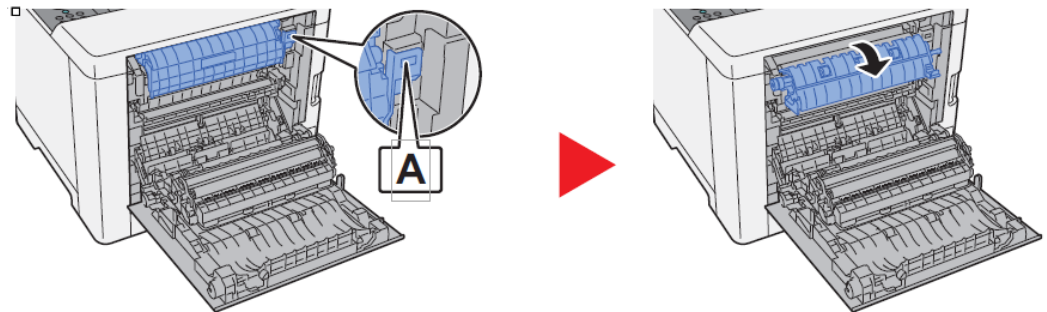
Open the Rear Cover 1.



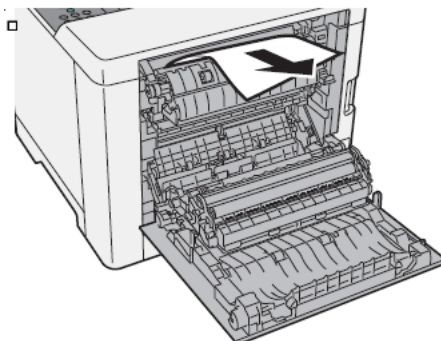
Remove any jammed paper. Do not reuse the jammed papers. If the paper tears during removal, be sure to remove any loose scraps of paper from inside the machine. Scraps of paper left in the device could cause subsequent jamming.



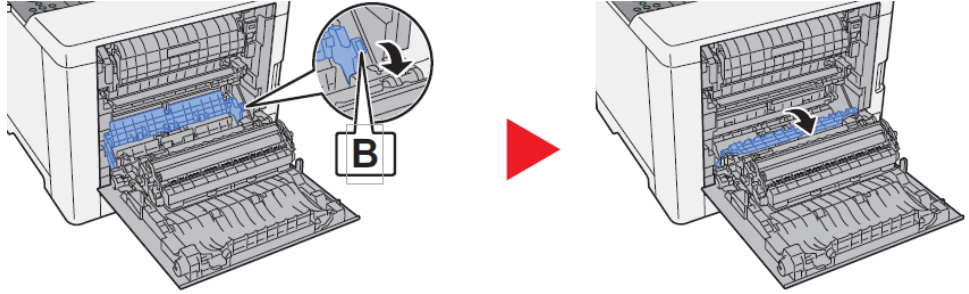
Open the cover (A).



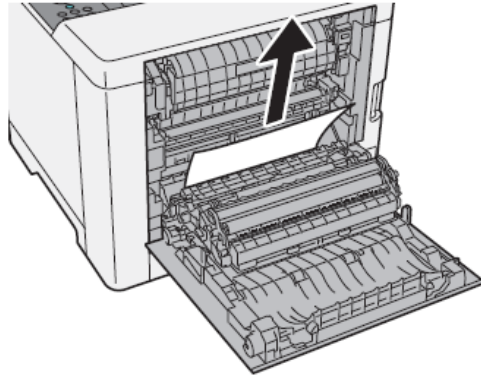
Remove any jammed paper.



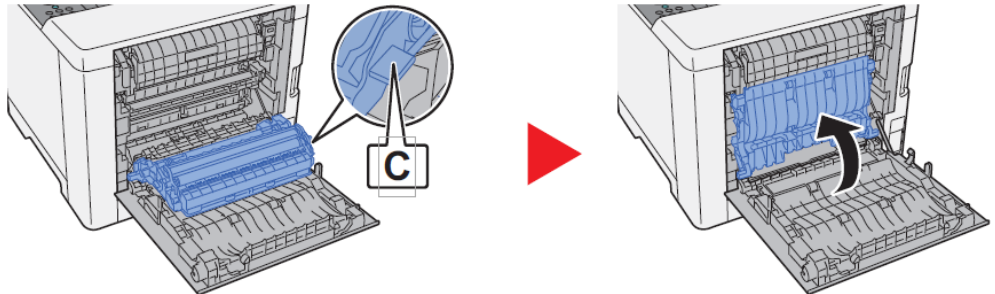
Open the feed cover (B).



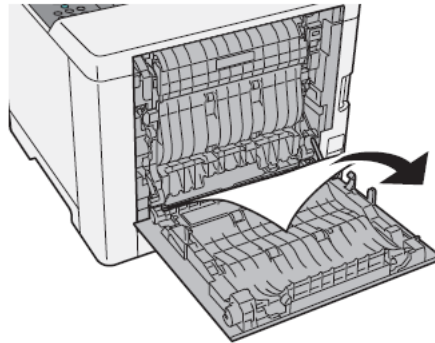
Remove any jammed paper.



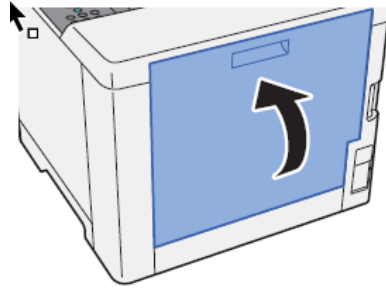
Open the duplex unit (C).



Remove any jammed paper.

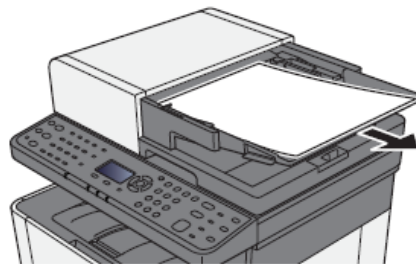


Push and close the Rear Cover 1.

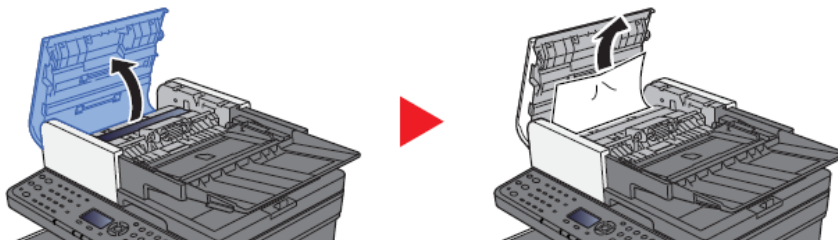


Paper Jam in the Document Processor

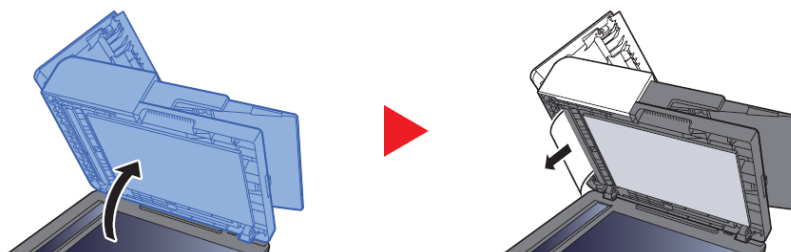
Remove the originals from the Original Table.



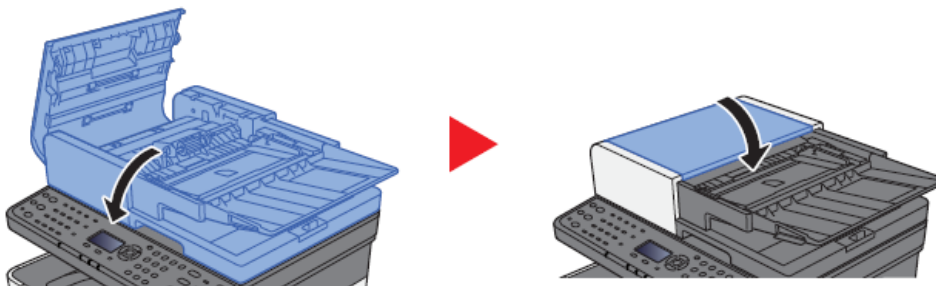
Open the top cover and remove any jammed paper.



Remove originals from inside the document processor.



Close the cover.



Setting the Connection by Using the Wi-Fi Setup Tool (Microsoft Windows)

To send the Wi-Fi settings configured in the Wi-Fi Setup Tool to the machine, connect the computer with the machine locally. The connection methods are wired connection via LAN cable and wireless LAN connection (Wi-Fi Direct).

Note:

Before using Wi-Fi Setup Tool, connect your computer to this machine locally with wired LAN cable or Wi-Fi Direct.

To use Wi-Fi Direct, confirm that the Wi-Fi Direct is enabled (Wi-Fi Direct is set to **[ON]**) and Restart Network from the operation panel, before your computer will be connected to this machine with Wi-Fi Direct)

To use a wired LAN cable directly connected to the machine, the Auto-IP (Link-local) address will be assigned to the machine and the computer. This machine applies Auto-IP as the default settings.

Configure the settings on the operation panel if your computer supports WPS.

Wireless Connection setup by Using LAN Cable

Connect the printer with a computer:

Connect the printer with a computer via LAN cable when the machine is powered on.

Turn on the computer. IP address (link local address) of the machine and computer is generated automatically.

Insert the DVD (if your computer is equipped with one) or visit our web site and download the latest Wi-Fi setup tool. <https://www.kyoceradocumentsolutions.us/ma2100cwfx>

Note:

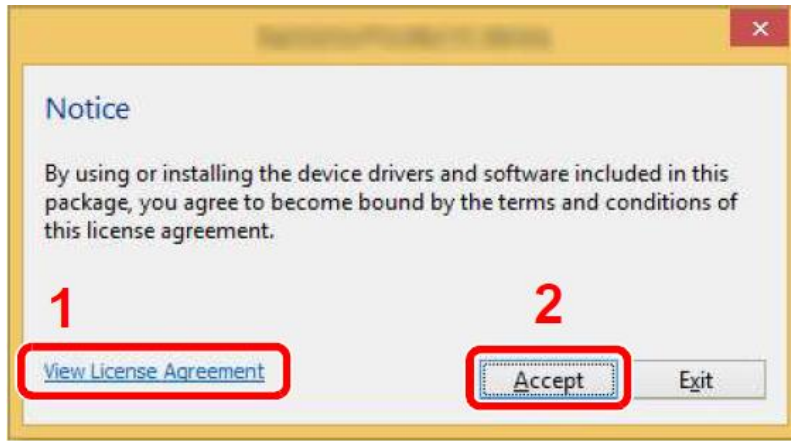
Installation on Windows must be done by a user logged on with administrator privileges.

If the "Welcome to the Found New Hardware Wizard" dialog box displays, select **[Cancel]**.

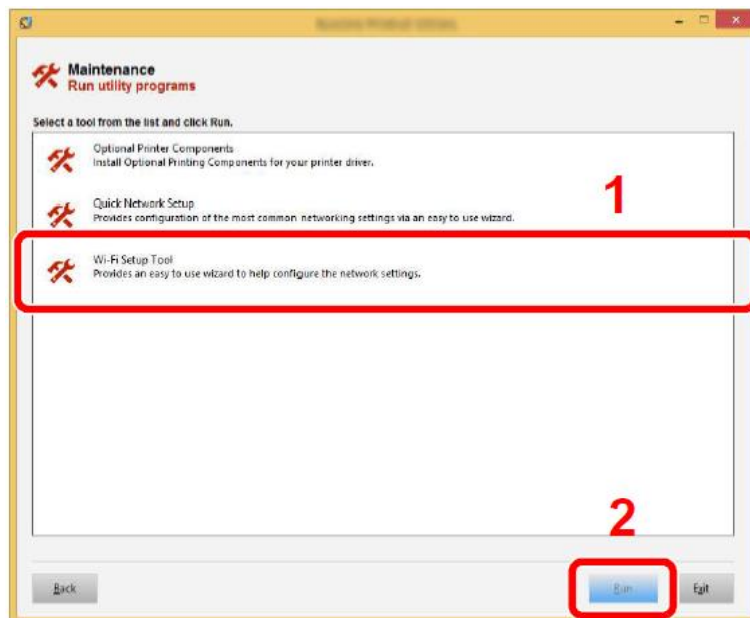
If the autorun screen is displayed, click **[Setup setuo.exe]**.

If the user account management window appears, click **[Yes]** (**[Allow]**).

Click [Accept].

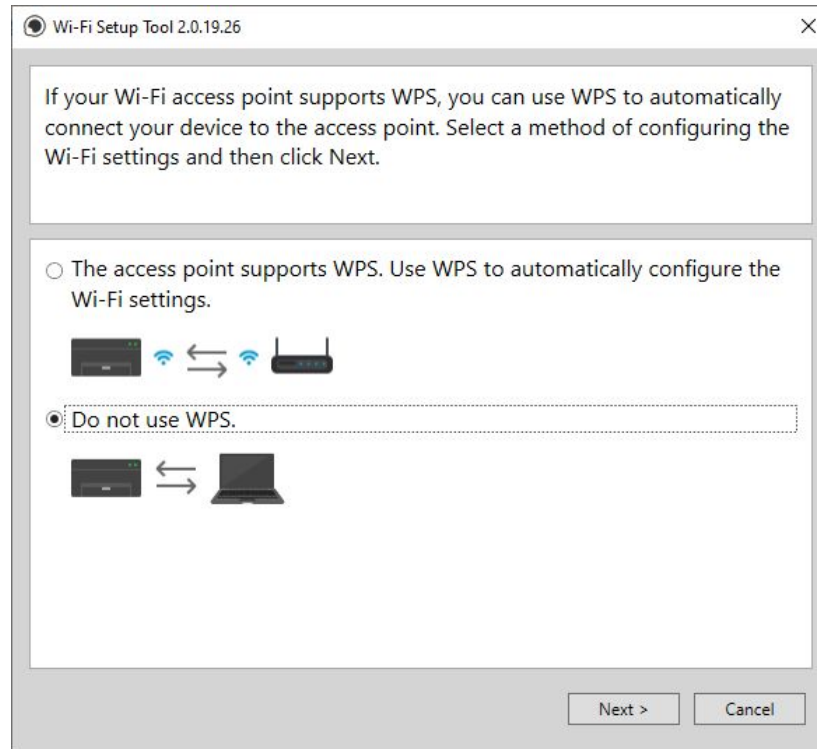


Select Maintenance.
Wi-Fi Setup Tool > [OK]

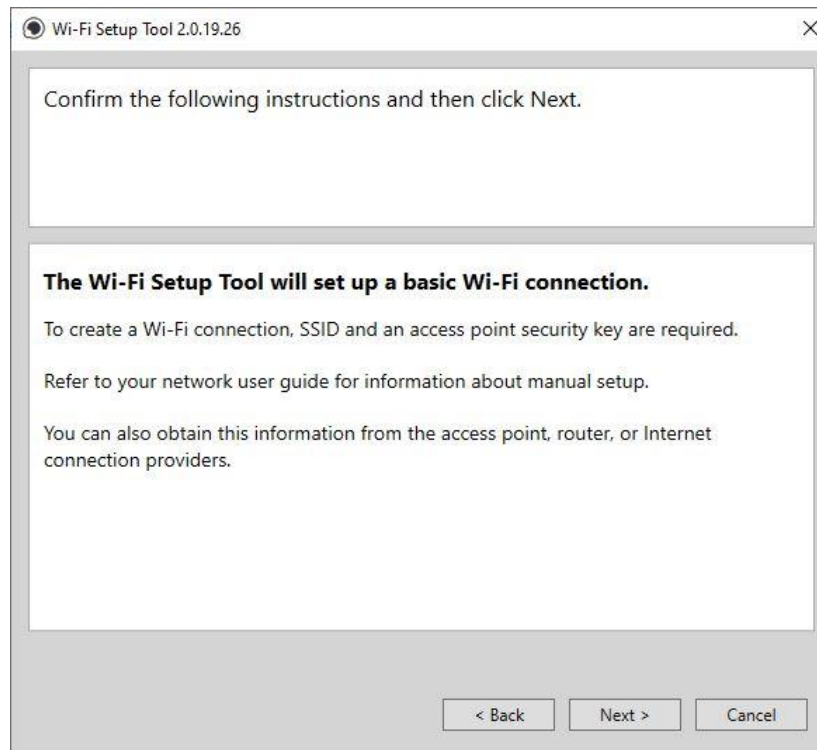


Configure the settings.

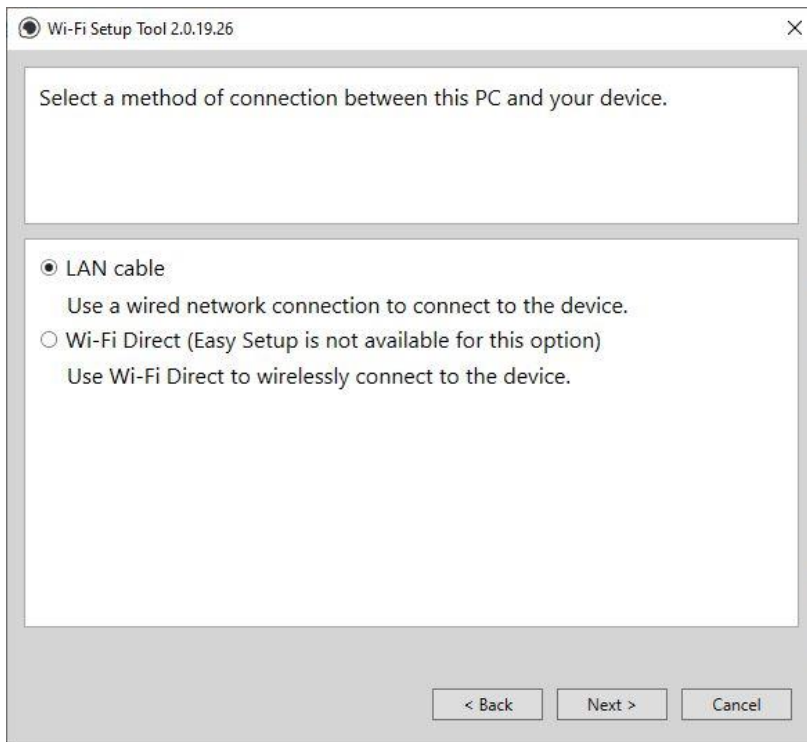
Select "Do not use WPS".



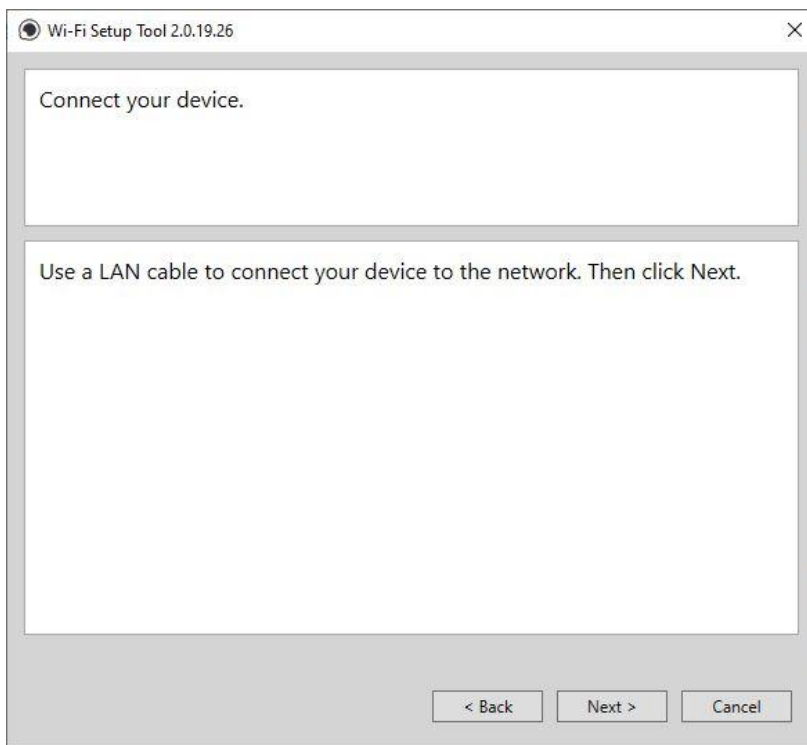
Press Next.



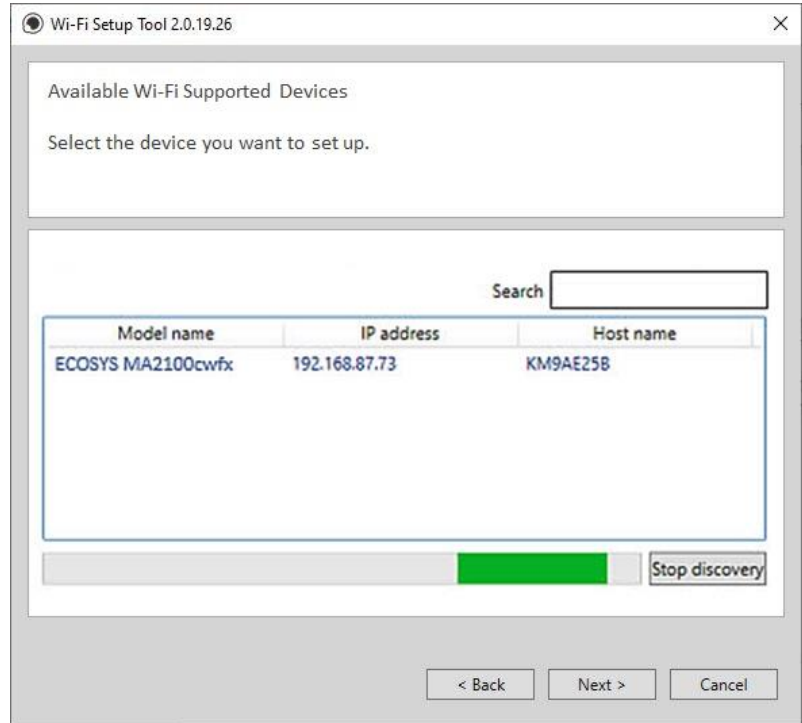
Pres Select LAN cable and press Next.



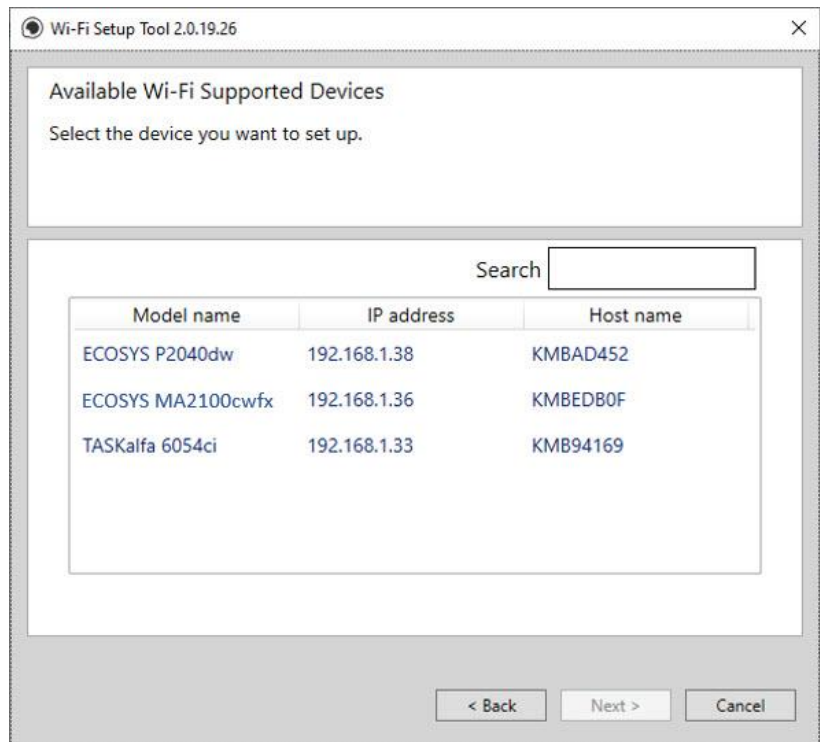
Press Next.



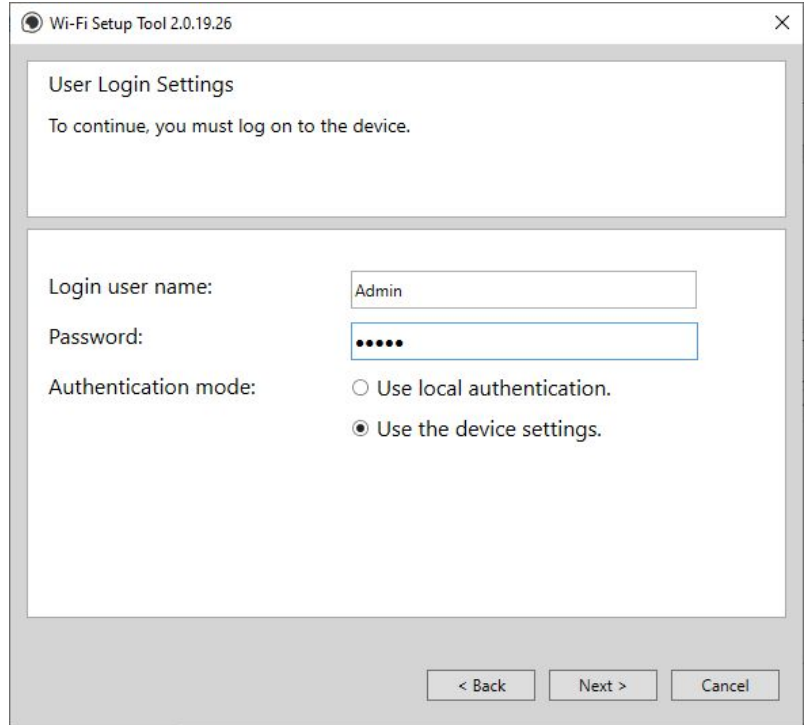
Select Easy setup and Press Next.



A list of available printers will be displayed, select you model and press Next.

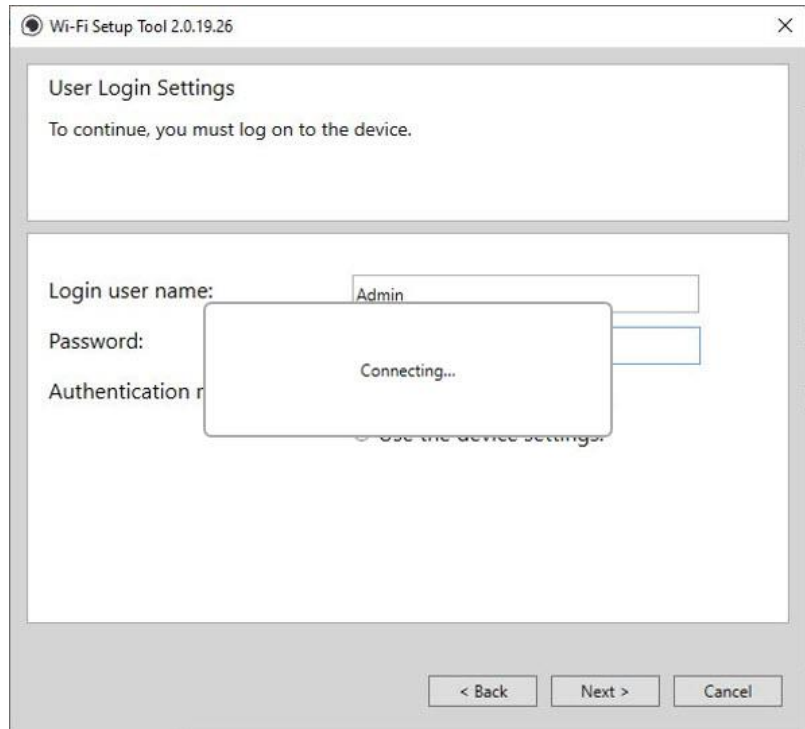


A Enter Admin for Username and Admin for password. Select Use device settings. Press Next.



The image shows a dialog box titled "Wi-Fi Setup Tool 2.0.19.26" with a close button (X) in the top right corner. The main content area is titled "User Login Settings" and contains the text "To continue, you must log on to the device." Below this, there are three input fields: "Login user name:" with the text "Admin" entered, "Password:" with six dots, and "Authentication mode:" with two radio button options: "Use local authentication." (unselected) and "Use the device settings." (selected). At the bottom right, there are three buttons: "< Back", "Next >", and "Cancel".

Software will show connecting status.



The image shows the same "Wi-Fi Setup Tool 2.0.19.26" dialog box as above, but with a modal dialog box overlaid in the center. The modal dialog box is titled "Connecting..." and is positioned over the "Authentication mode:" section. The background content of the main dialog box is partially obscured but still visible, showing the "Login user name:" field with "Admin", the "Password:" field with dots, and the "Authentication mode:" section with the "Use the device settings." option selected. The buttons "< Back", "Next >", and "Cancel" are still visible at the bottom right.

Select your Network Authentication type and enter Password in the Pre-Shared Key field. Press Next.

Wi-Fi Setup Tool 2.0.19.26

The Wi-Fi Setup Tool will set up a basic Wi-Fi connection.
If you are setting up an enterprise network, go to the device webpage.
<https://192.168.1.36>
If you are not setting up an enterprise network, click "Next".

Target Device:
ECOSYS MA2100cwf - 192.168.1.36

Network Name (SSID): classroom5

Network Authentication: WPA2/WPA-PSK

Encryption: Disable

WEP Key:

WEP Key Index: 0

Encryption: AUTO

Pre-Shared Key: ●●●●●●●●

< Back Next > Cancel

Software will show connecting status.

Wi-Fi Setup Tool 2.0.19.26

The Wi-Fi Setup Tool will set up a basic Wi-Fi connection.
If you are setting up an enterprise network, go to the device webpage.
<https://192.168.1.36>
If you are not setting up an enterprise network, click "Next".

Target Device:
ECOSYS MA2100cwf - 192.168.1.36

Network Name (SSID): classroom5

Network Authentication: WPA2/WPA-PSK

Encryption: Disable

WEP Key:

WEP Key Index: 0

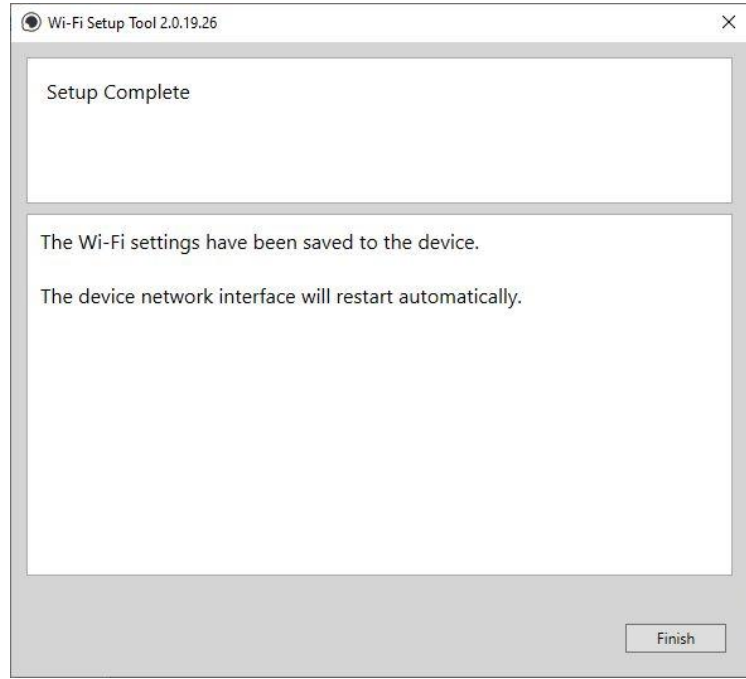
Encryption: AUTO

Pre-Shared Key: ●●●●●●●●

Connecting...

< Back Next > Cancel

Setup Complete.



Note: Only one device can be added at a time using Wi-Fi setup tool. It may take some time to search for the device.



Wireless Connection setup by Using Wi-Fi Direct

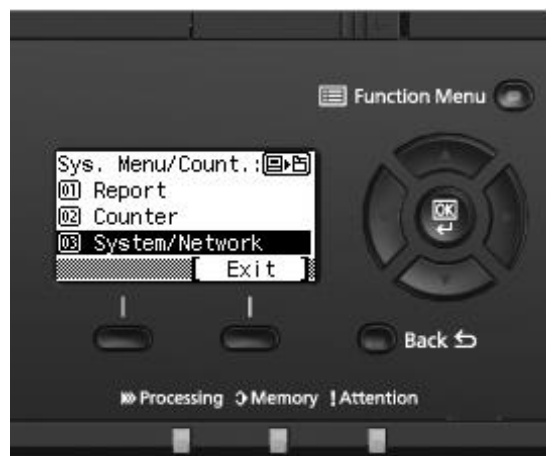
Enabling Wi-Fi Direct

When the wireless network function is available on the machine, setting Wi-Fi Direct enables you to print from the Wi-Fi Direct environment. The configuration methods are as follows:

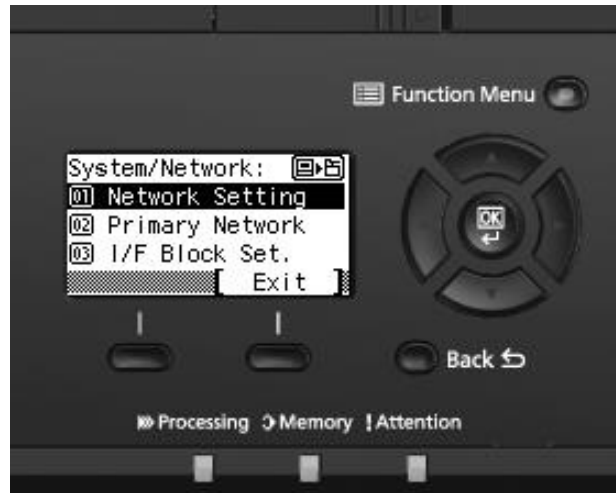
Press [**System Menu**] key.



Scroll down using arrow key to [**System/Network**], Press OK.



Select [**Network Setting**], Press OK.



Scroll down using arrow key to [**Wi-Fi Direct Settings**], Press OK.



Scroll down to turn ON [**Wi-Fi Direct**], Press OK.



Find Wi-Fi Direct SSID and password

Press the Wi-Fi Direct button.



Scroll down to [**Detail Info**] using down arrow key, press OK.



Press the right arrow key multiple times to show the network name (SSID), password and IP address.



Connect the Computer to the Wi-Fi direct SSID

1. [Settings] > [Wi-Fi].
2. Select the network name (SSID) appeared in previous step.
3. Enter the password that was provided in previous step> [Connect].

The network between this printer and the computer/ handheld device is configured.

Configuring Wi-Fi with the Wi-Fi Setup Tool using Wi-Fi Direct

Insert the DVD (if your computer is equipped with one) or visit our web site and download the latest Wi-Fi setup tool. <https://www.kyoceradocumentsolutions.us/ma2100cwfxf>

Note:

Installation on Windows must be done by a user logged on with administrator privileges.

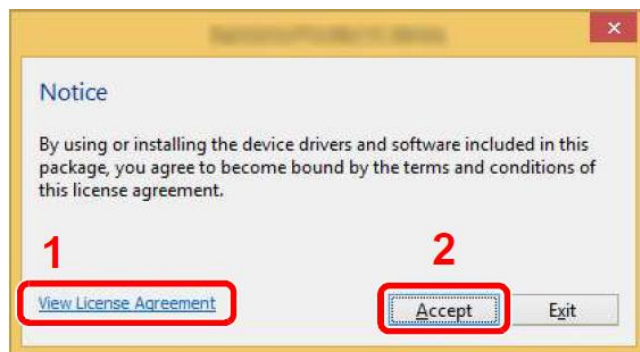
If the "Welcome to the Found New Hardware Wizard" dialog box displays, select [**Cancel**].

If the autorun screen is displayed, click [**Run setup.exe**].

If the user account management window appears, click [**Yes**](**[Allow]**).

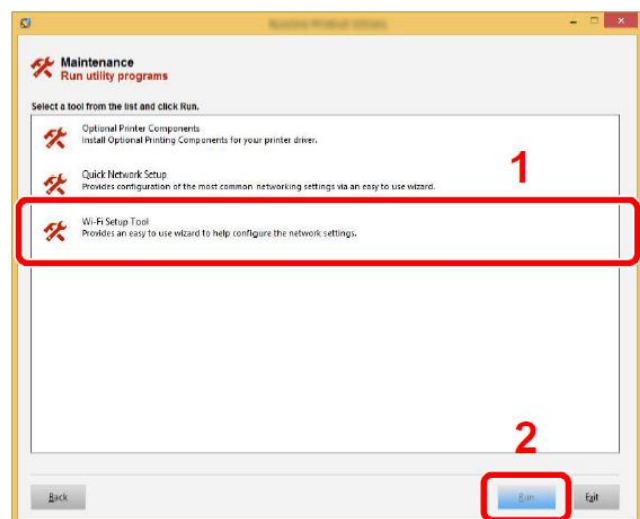
Click [View License Agreement] and read the License Agreement.

Click [Accept].



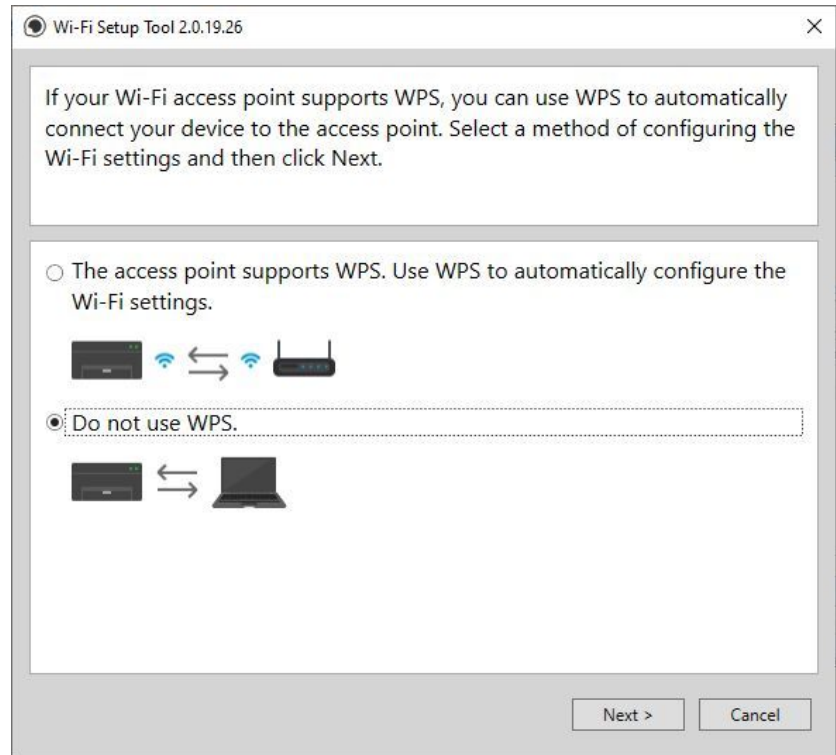
Select [Maintenance].

[Wi-Fi Setup Tool] > [OK].

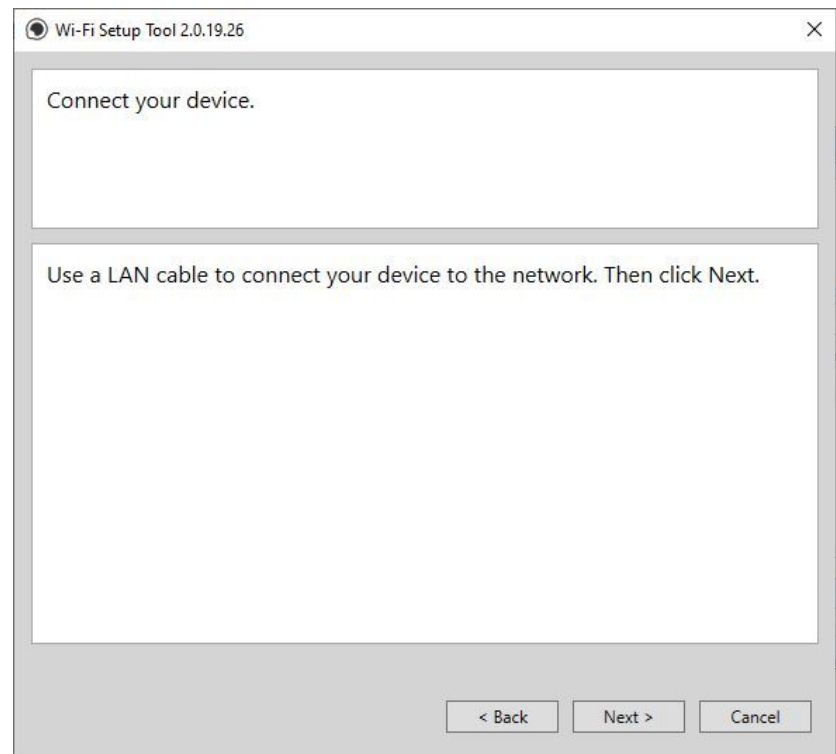


Configure the settings.

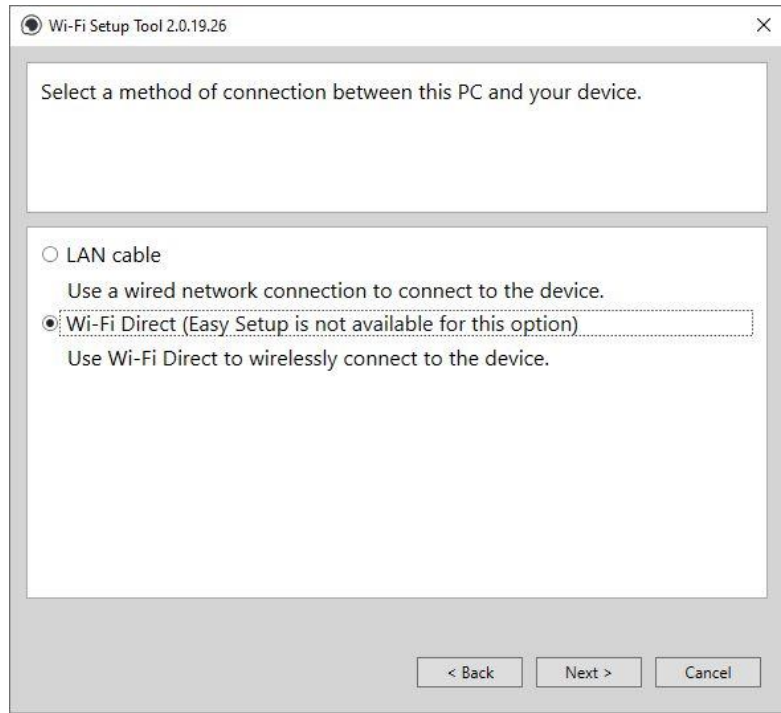
Select "Do not use WPS".



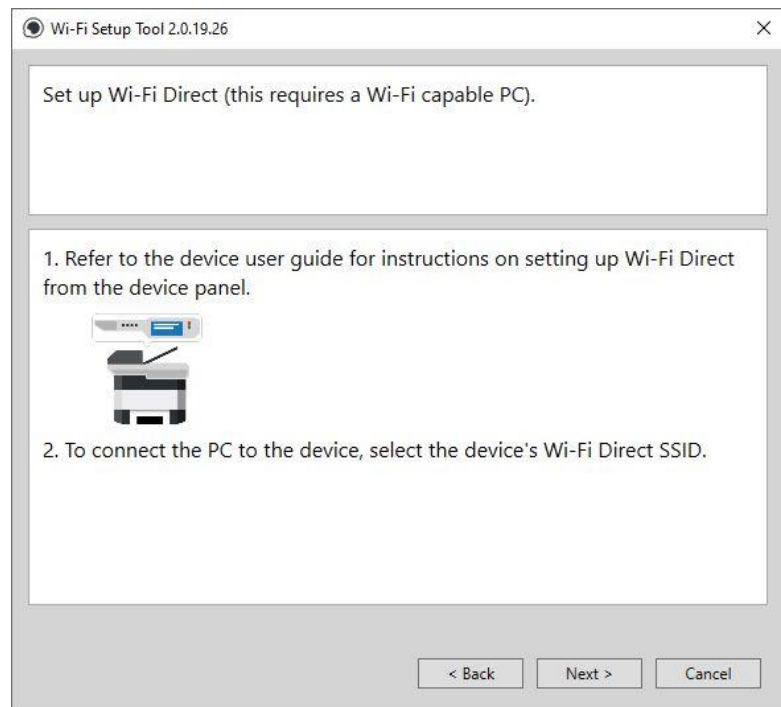
Press next.



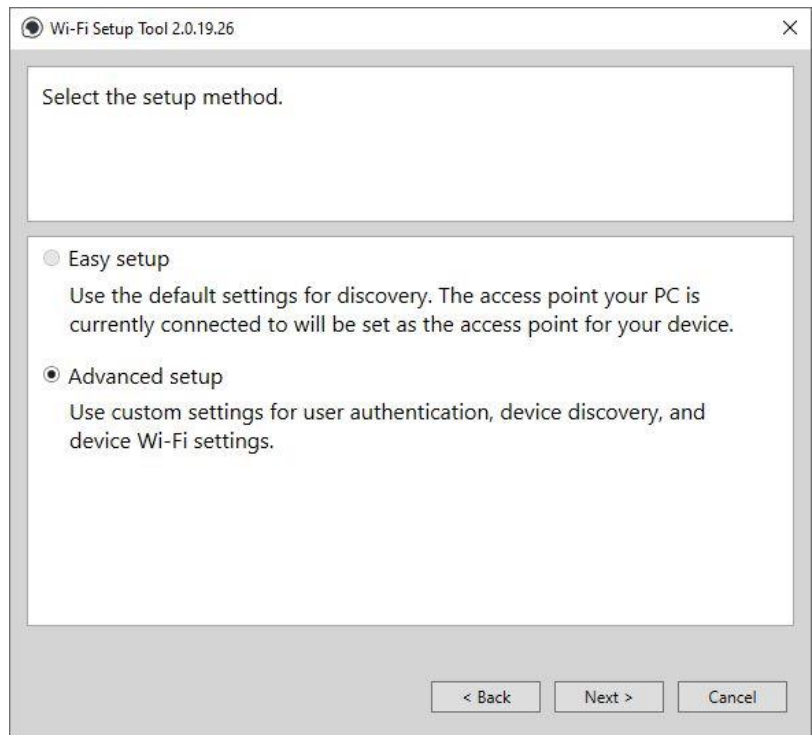
Press Next.



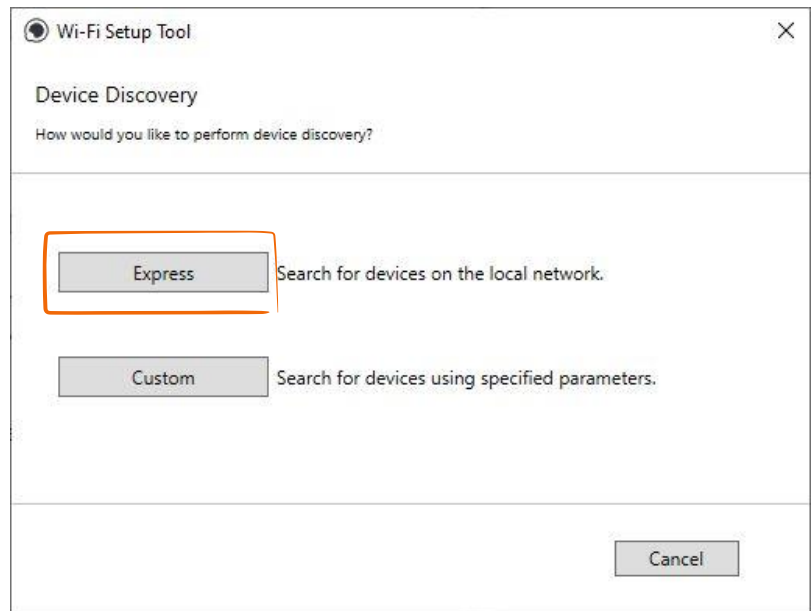
Select Wi-Fi Direct and press Next.



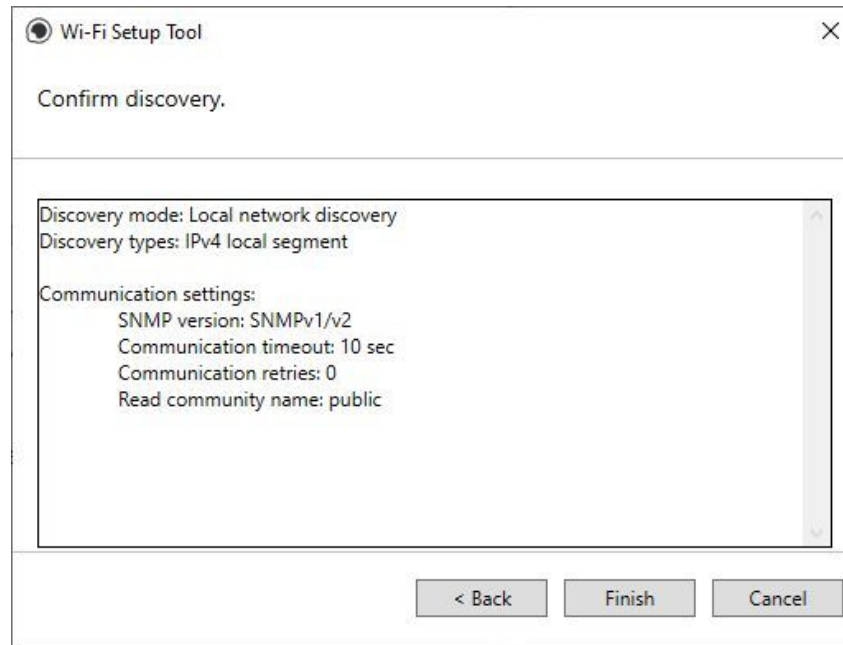
Press Next.



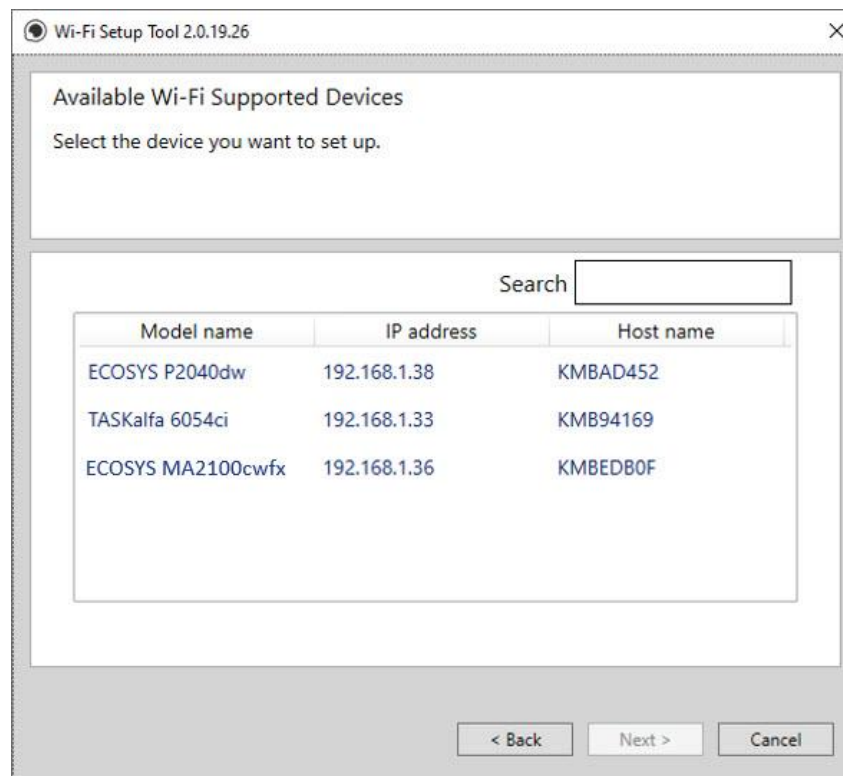
Select Advanced setup and Press Next.



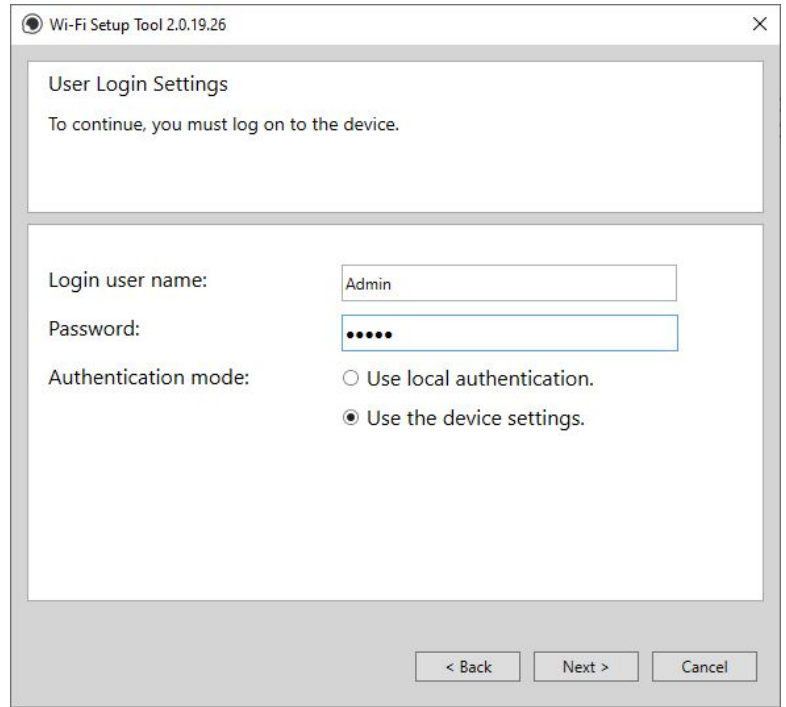
Select Express.



Select Finish.



A list of available printers will be displayed, select you model and press Next. Software will show connecting status.



Wi-Fi Setup Tool 2.0.19.26

User Login Settings
To continue, you must log on to the device.

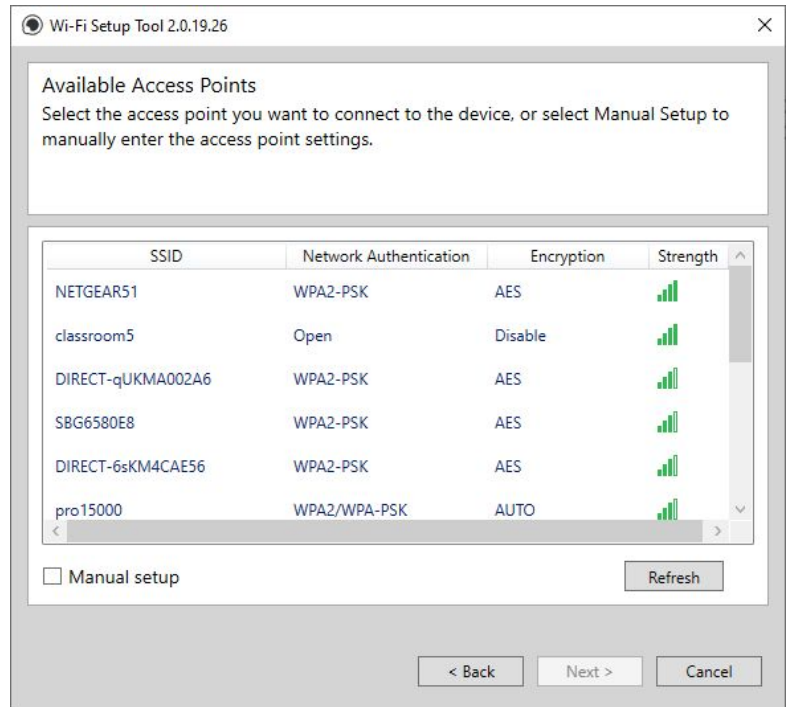
Login user name:

Password:

Authentication mode:
 Use local authentication.
 Use the device settings.

< Back Next > Cancel

Enter Admin for Username and Admin for password. Select Use device settings. Press Next.



Wi-Fi Setup Tool 2.0.19.26

Available Access Points
Select the access point you want to connect to the device, or select Manual Setup to manually enter the access point settings.

SSID	Network Authentication	Encryption	Strength
NETGEAR51	WPA2-PSK	AES	📶
classroom5	Open	Disable	📶
DIRECT-qUKMA002A6	WPA2-PSK	AES	📶
SBG6580E8	WPA2-PSK	AES	📶
DIRECT-6sKM4CAE56	WPA2-PSK	AES	📶
pro15000	WPA2/WPA-PSK	AUTO	📶

Manual setup Refresh

< Back Next > Cancel

Select you network SSID and press Next.

Wi-Fi Setup Tool 2.0.19.26

The Wi-Fi Setup Tool will set up a basic Wi-Fi connection.
If you are setting up an enterprise network, go to the device webpage.
<https://192.168.1.36>
If you are not setting up an enterprise network, click "Next".

Target Device:
ECOSYS PA2100cwx - 192.168.1.36

Network Name (SSID): KDAMIS

Network Authentication: WPA2-PSK

Encryption: Disable

WEP Key:

WEP Key Index: 0

Encryption: AES

Pre-Shared Key: ●●●●●●

< Back Next > Cancel

Select your Network Authentication type and enter Password in the Pre-Shared Key field. Press Next.

Wi-Fi Setup Tool 2.0.19.26

The Wi-Fi Setup Tool will set up a basic Wi-Fi connection.
If you are setting up an enterprise network, go to the device webpage.
<https://192.168.1.36>
If you are not setting up an enterprise network, click "Next".

Target Device:
ECOSYS MA2

Network Name (SSID): [Connecting...]

Network Authentication: WPA2-PSK

Encryption: Disable

WEP Key:

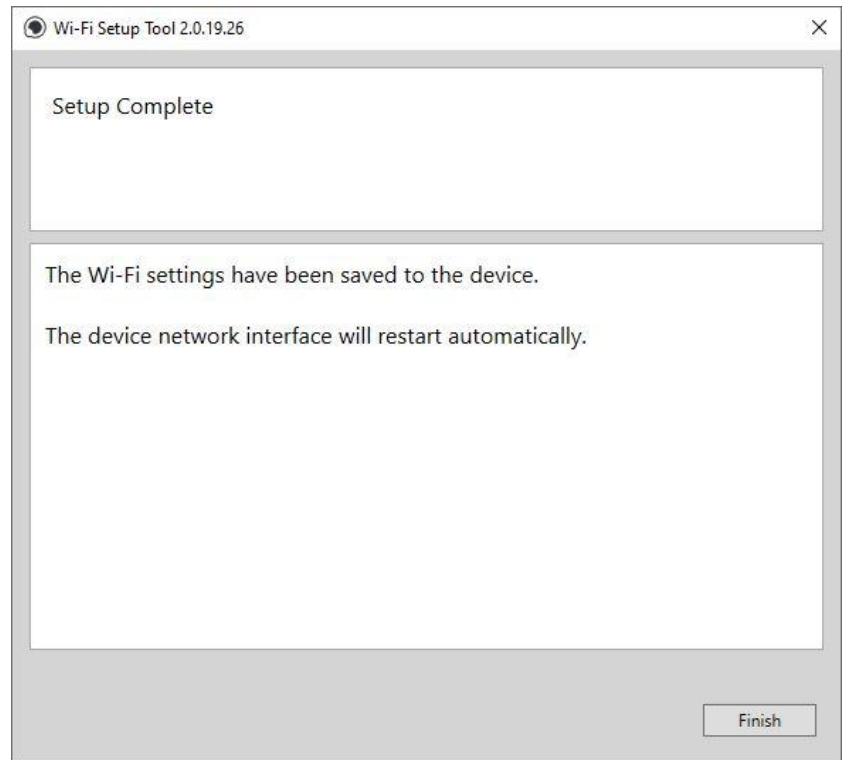
WEP Key Index: 0

Encryption: AES

Pre-Shared Key: ●●●●●●

< Back Next > Cancel

Software will show connecting status.



Setup Complete. Select **Finish**.

Note: Only one device can be added at a time using Wi-Fi setup tool. It may take some time to search for the device.

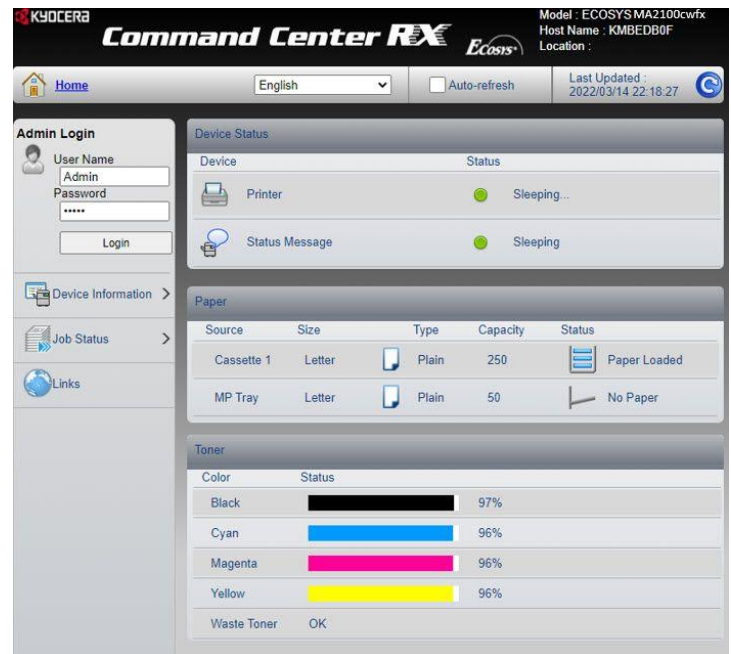


When trying to access the Command Center web page on my MA2100cwx it states, "incorrect login Username or Password"

The default login is Admin (capital A) for both the Username and PW. If the issue persists, try a different browser.

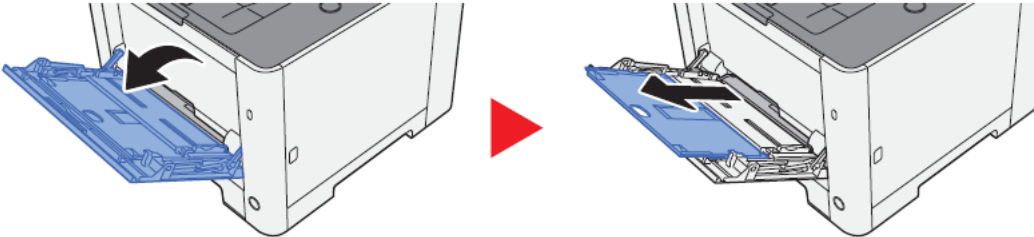


Once logged in you will see the available links listed on the left side of the page.



How can I print onto “Special Media” such as Envelopes or Labels on my MA2100cwx?

For special media you must use the Multipurpose tray. Open the MP tray and load the desired media type.



Next, the settings need to be configured on the device for the paper that was loaded. For example, when loading standard size 10 envelopes the MP Tray Size needs to be set to Envelope #10 and the MP Tray Type would be Envelope.

Multipurpose Tray.

[**System Menu/Counter**] key > [**Cassette/MP Tray Settings**] > [**Multipurpose Tray**].

Select paper size and media type for the multipurpose tray.

Item	Description
Paper Size	Metric Select from the metric standard sizes. Values: A4, A5-R, A5, A6, B5, B6, Folio, 216x340 mm
	Inch Select from the Inch series standard sizes. Values: Letter, Legal, Statement-R, Statement, Executive, Oficio II
	Other Select from the inch series standard sizes. Values: 16K, ISO B5, Envelope #10, Envelope #9, Envelope #6, Envelope Monarch, Envelope DL, Envelope C5, Hagaki (Cardstock), Oufutuki hagaki (Return postcard), Youkei 2, Custom
Media Type	Select the media type. Values: Plain (60 to 105 g/m ²), Rough, Transparency, Vellum (60 to 220 g/m ²), Labels, Recycled, Prepinted, Bond, Cardstock, Color, Prepunched, Letterhead, Envelope, Thick (106 to 220 g/m ²), Coated, High Quality, Custom 1 to 8.

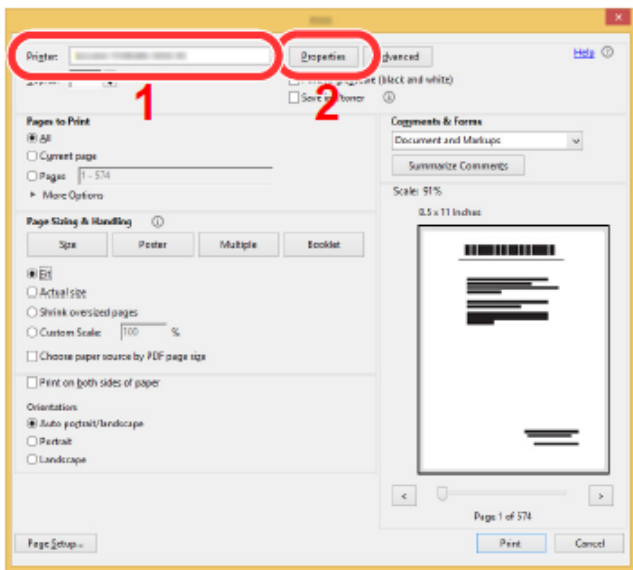
After the printer has been configured, the media setting in the print driver must be set as well. Open the file to be printed then follow the steps below.

Display the screen.

Click [**File**] and select [**Print**] in the application.

Configure the settings.

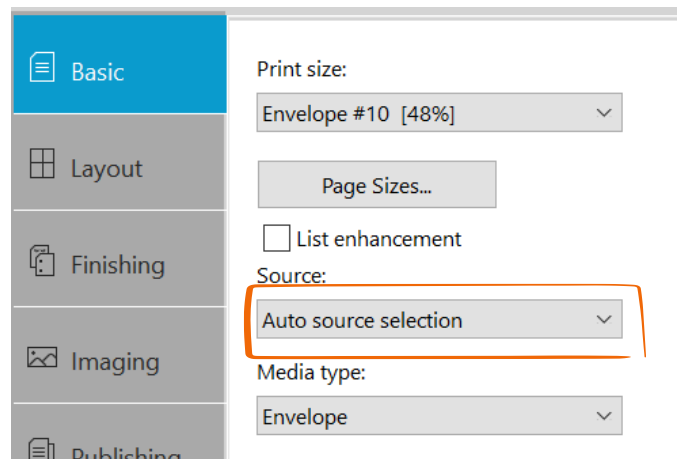
Select the machine from the "Printer" menu and click the [**Properties**] button.



Select the Basic tab to set the desired Media type.

Click [**OK**] button to return to the Print dialog box.
Start printing.

Click the [**OK**] button.






Installing the Apple OS print driver

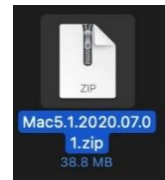
The driver can be downloaded from our Public website. Go to <https://www.kyoceradocumentsolutions.us/en/support/downloads.name-L3VzL2VuL21mcC9UQVNLQUxGQTQ1NTFDSQ==.html>

Select Support in upper right of page, select Download Center, then enter the model number and select model from list. The page will refresh, and you will be presented with many driver files, the latest Mac installer will be at top. Mac Driver 5.1 supports Mac OS X 10.9 and later. Click on the blue download arrow to the far right.

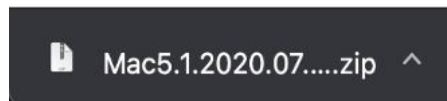
We have detected your Operating System: **Apple** [Change](#)

Mac Print Driver (5.1.2020.07.01)	36 MB ZIP	
Mac Driver v5.0 Software Information Guide (11/18/19)	963 KB PDF	
Mac Print Driver (5.0.2019.11.21)	37 MB ZIP	

Your file will start downloading. Depending on your browser the download progress will be in a different spot. Once your download is complete, go to your download folder (**1**) and you should see a file similar to this one. As versions change the file name will change. Double click on the .zip file.



Safari

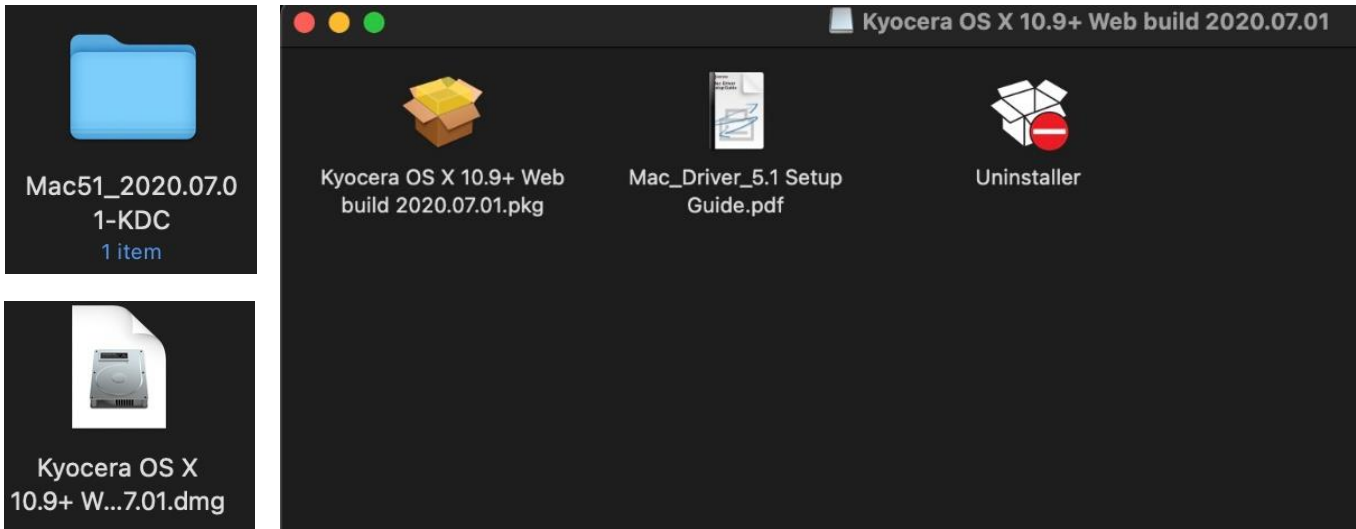


Chrome

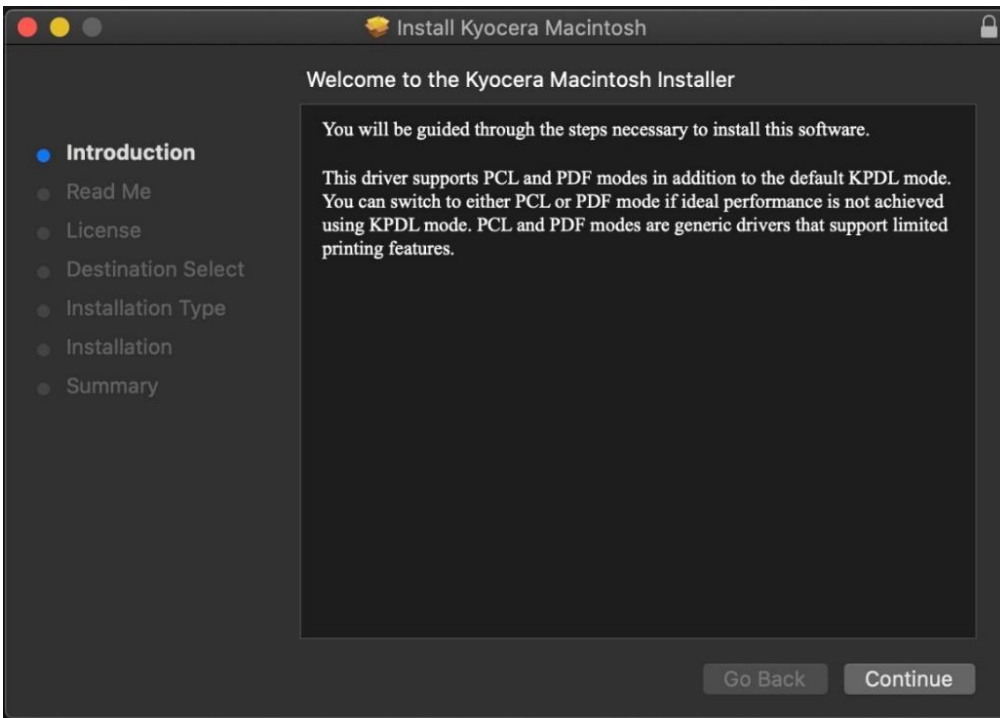


Firefox

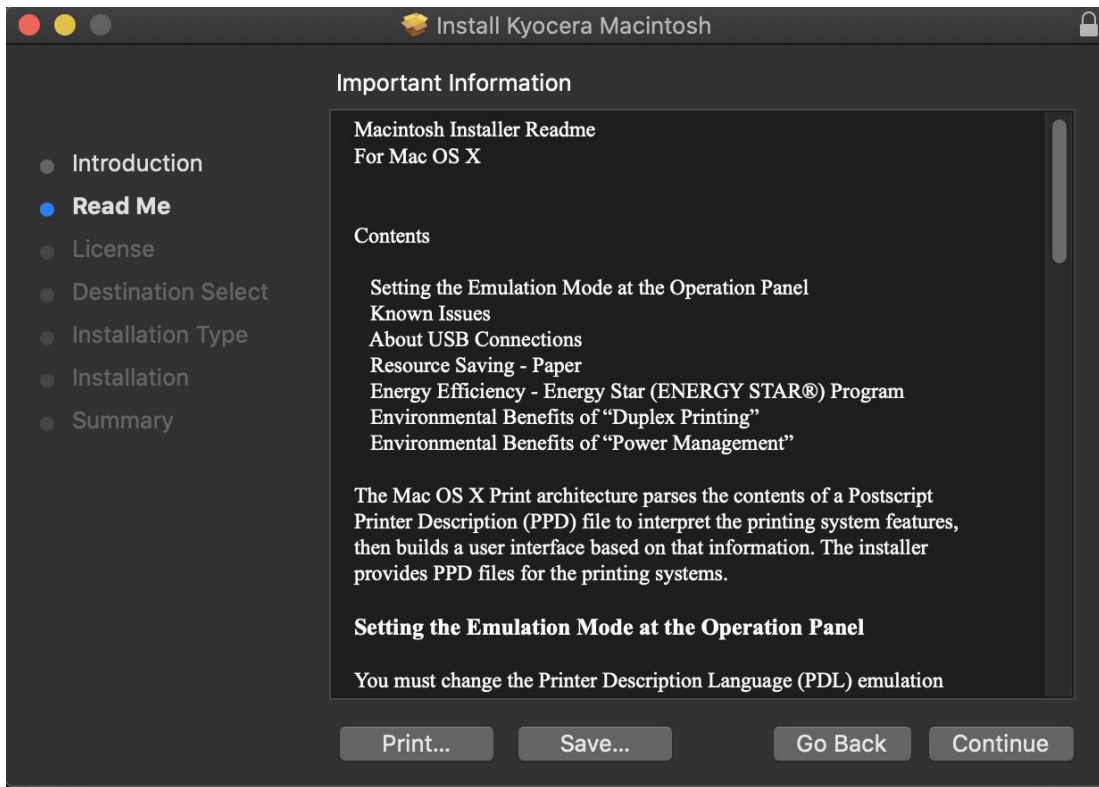
A new folder will be created. Double click on this folder. Then double click on .dmg file. This will open a new window with 3 files. A package file, setup guide. and the uninstaller. We would recommend running the uninstaller first if you are having trouble printing or have issues with a previously installed Kyocera driver. The Setup guide also has install and setup instructions in case you need a visual help file. Double click on the package (.pkg) file to start the install.



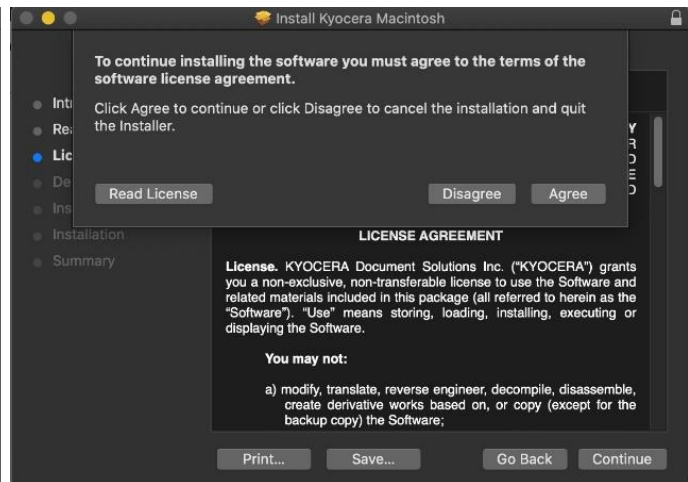
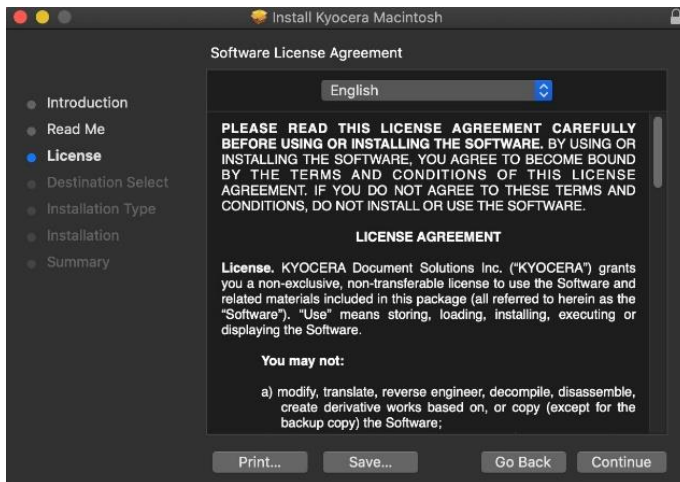
The welcome screen will come up first, select continue.



Next will be the read me notes, this contains information about what has been updated in this version and known issues. Select continue.



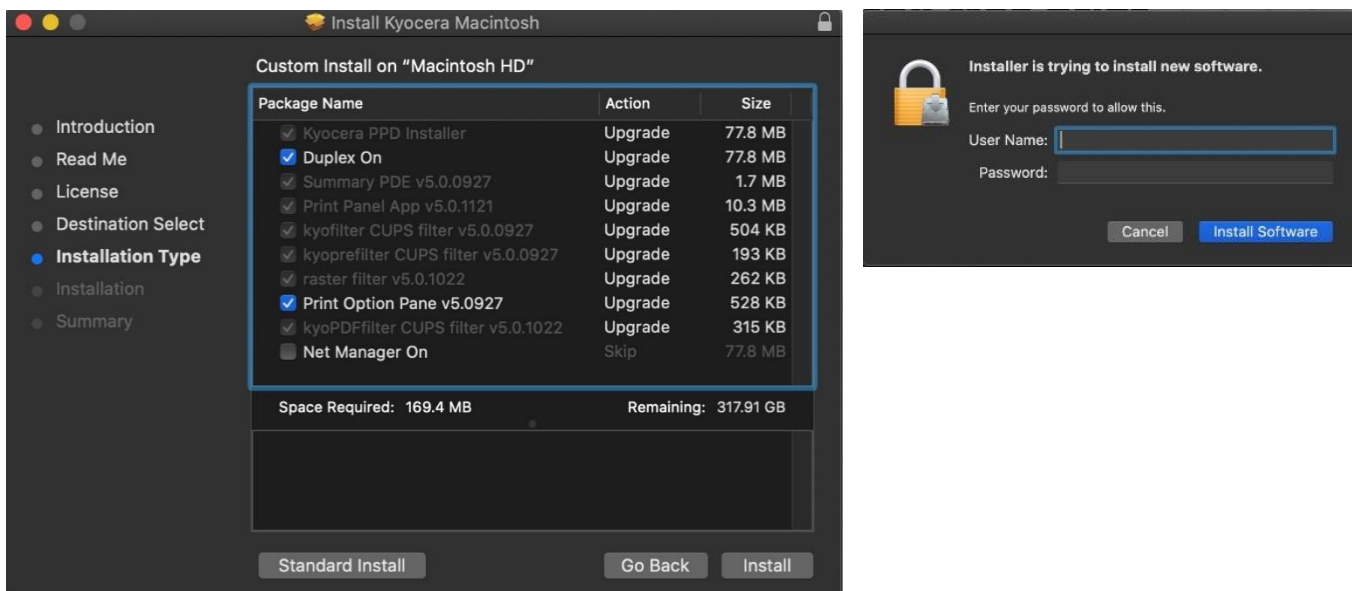
Next up is license agreement, select continue and agree.

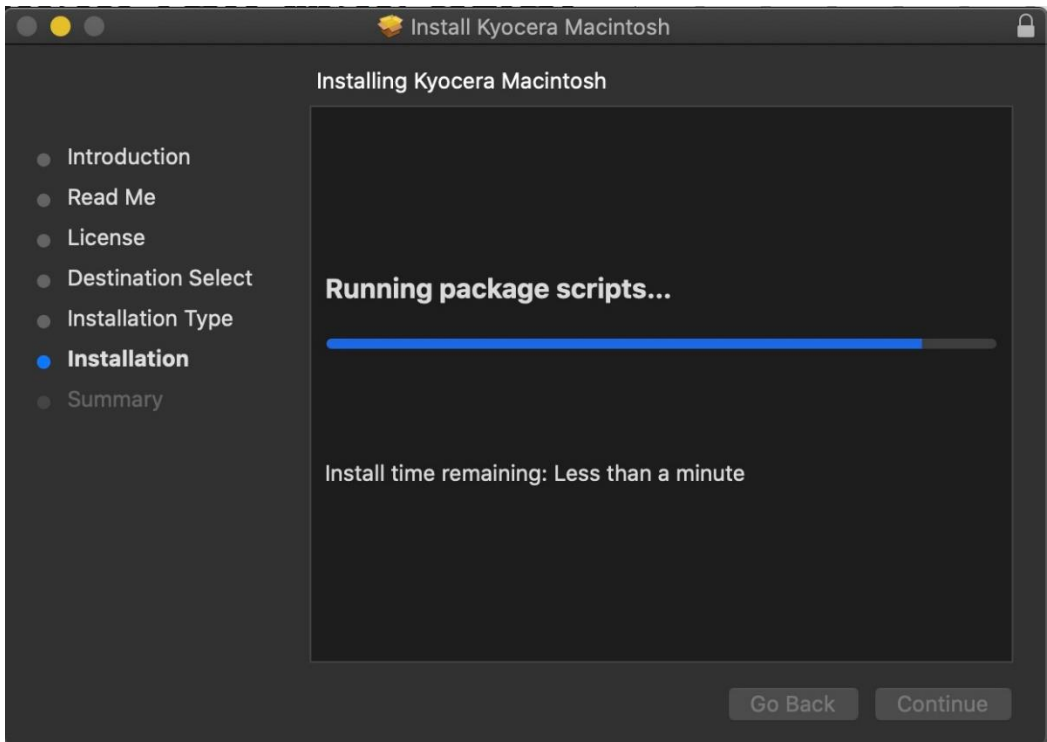


This next screen describes how much space will be taken up by installer. At this point you can customize your install, select customize.

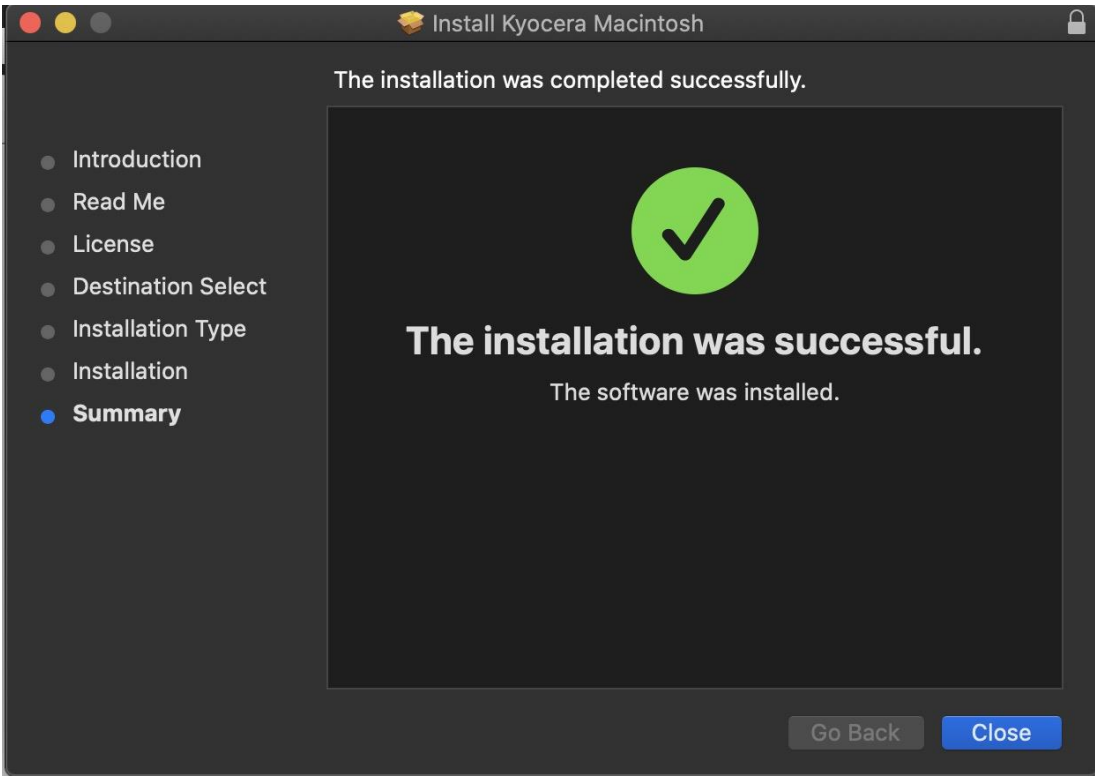


Here you will have the choice of turning off duplex by default, enabling Print option (for PCL and PDF output), or enabling Kyocera Net Manager. Select install (1) Enter the Admin Username and password for computer. Select install software.



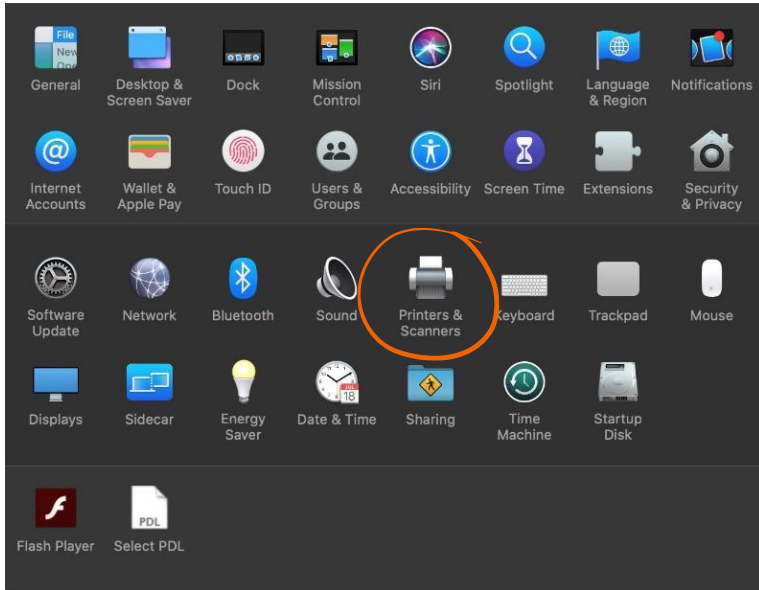
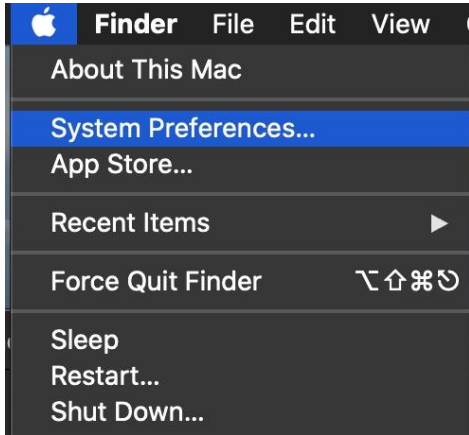


Install will continue, then select close. This will install the required files needed to configure the print driver.

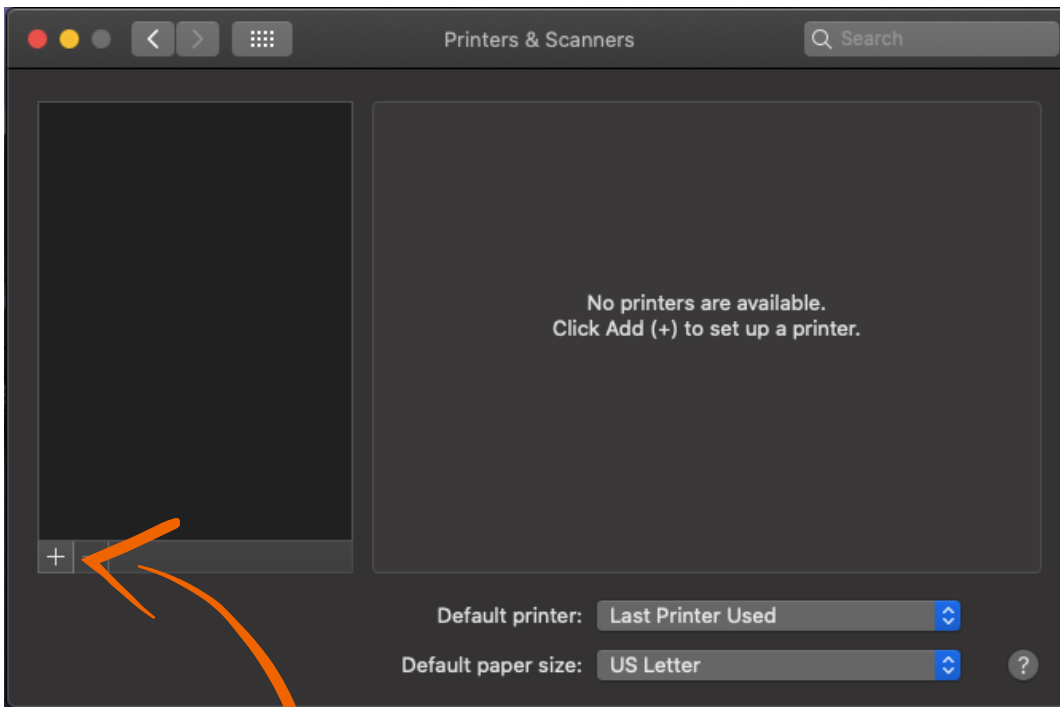


That install put the printer files and PPDs where they need to go on the Apple computer. Now for the actual printer setup.

First verify that your Kyocera device is powered on and connected to USB or network. Select the apple icon in upper left corner of computer screen, select System Preferences, then select Printers and Scanners.



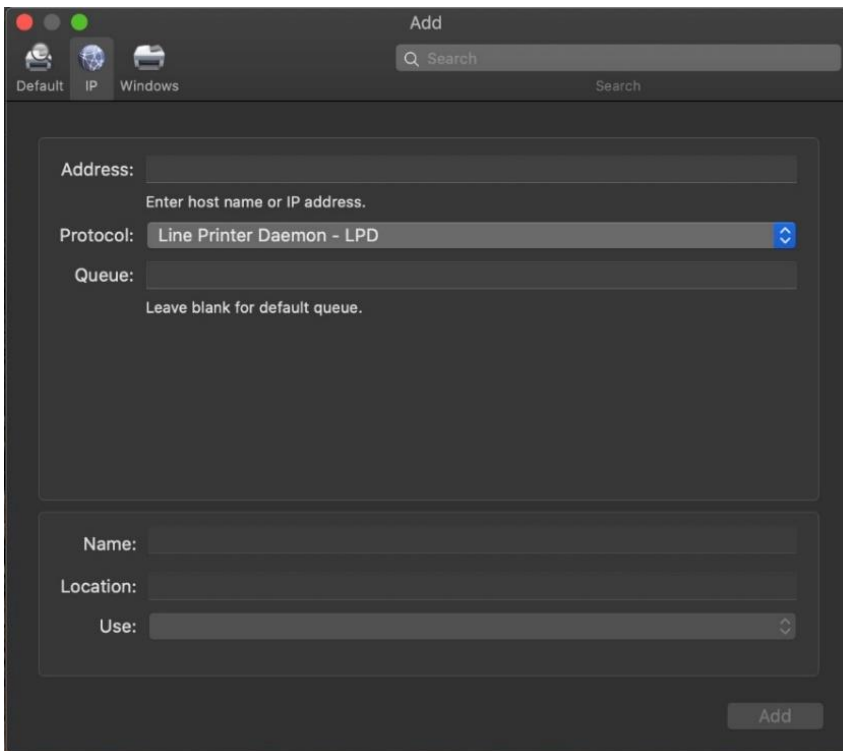
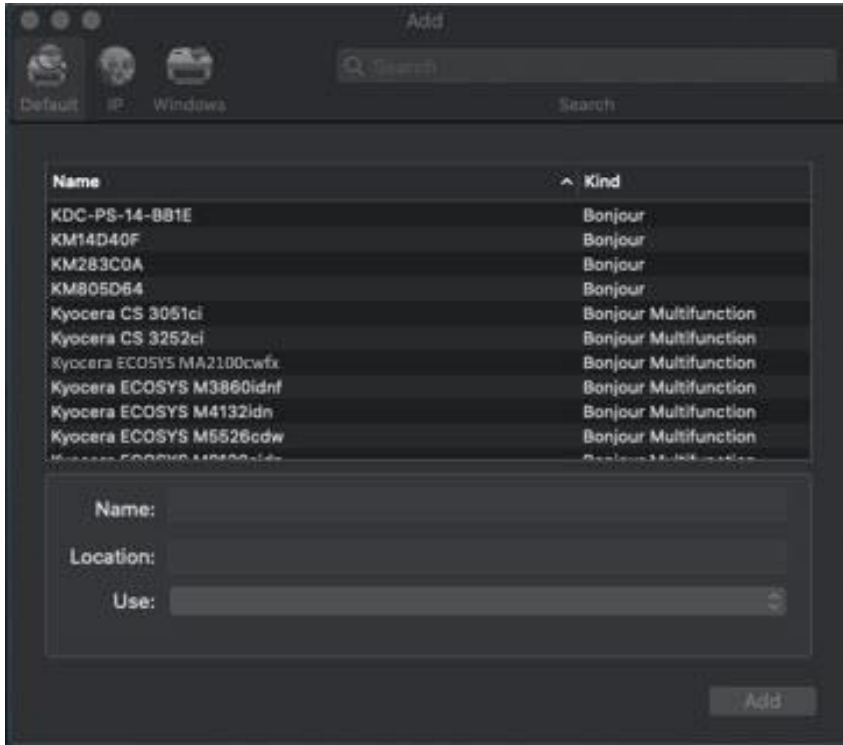
This will bring up the list of installed printers. To add a printer, press the plus sign in lower left.



This will start the install dialog.

Default will automatically discover your device with the Bonjour protocol if it's connected to a network and the device has Bonjour enabled (Bonjour is on by default our devices) also this is the method you would select for a USB connected printer.

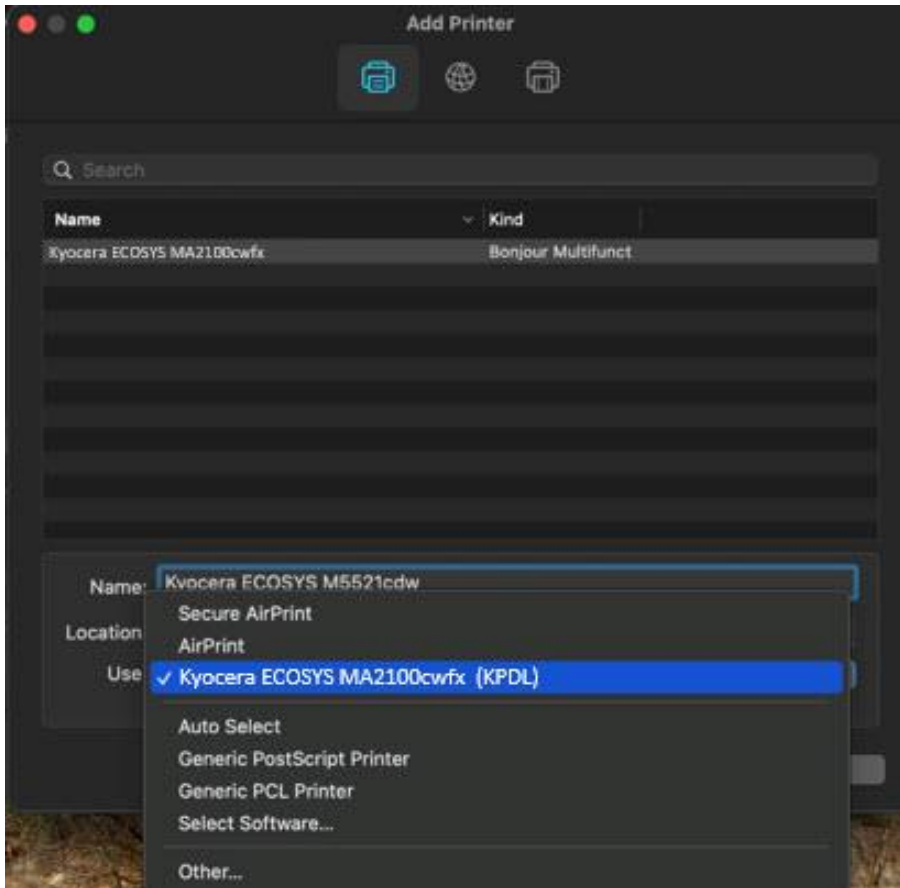
IP will allow you to enter a specific IP address for the device you're connecting to. (this is the preferred and most common method of adding networked Kyocera Devices).



Select the default tab. All your network and USB connected devices should appear in the window. Select your device, at this point verify in the "Use" field the correct model is selected with KPDL in parenthesis. By default, Apple selects Secure Airprint. This selection will not work correctly for our printers. Click the Use dropdown and change it to the correct PPD.

You can edit the Name and Location to whatever you wish.

Press add and the printer will be added to the device list.



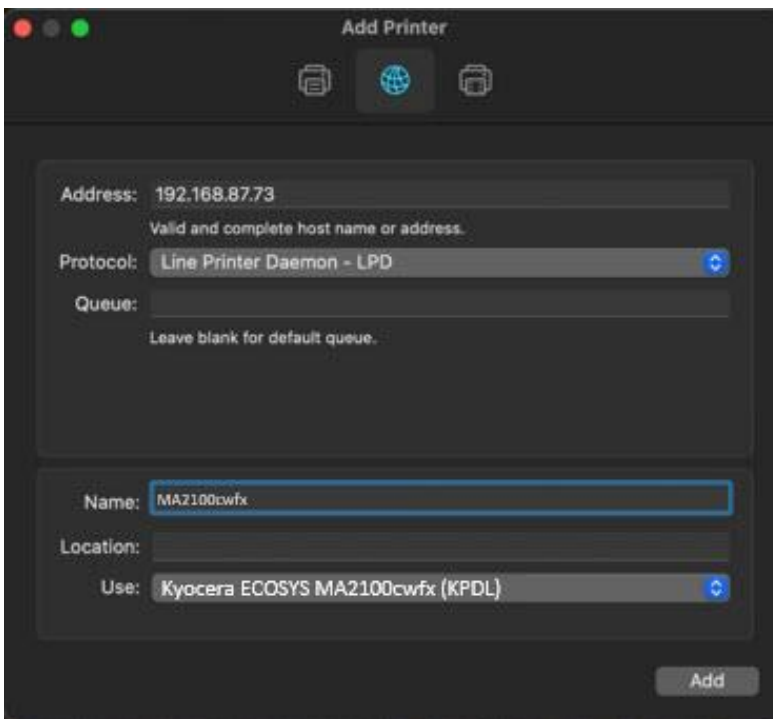
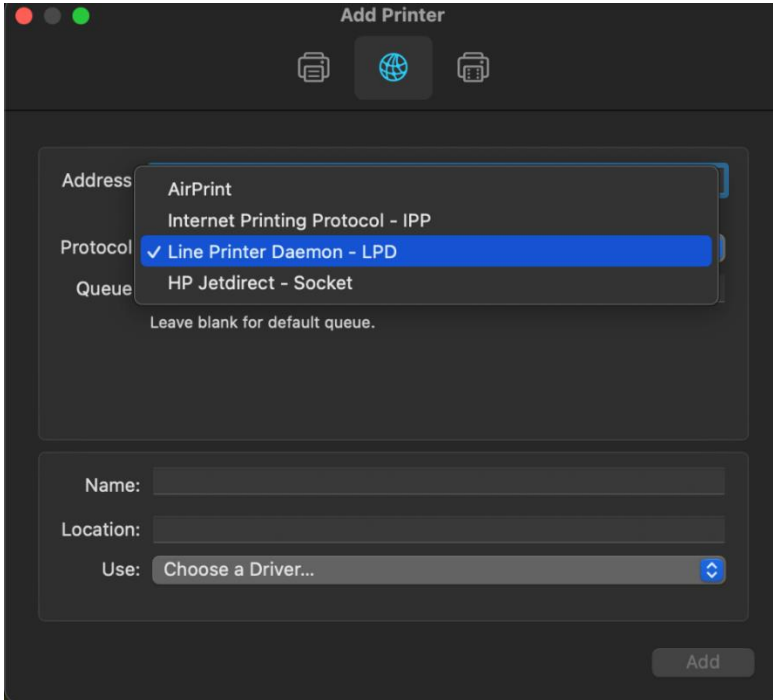
IP, this is the most common and preferred method, Select the IP tab. Verify the Protocol is set to Line printer daemon/LPD, this is the recommended protocol for Kyocera printers.

Enter the IP address of the desired printer, the queue will remain blank.

If Generic Postscript printer is displayed in the Use box, it could be that you are not connecting to the correct printer or it is offline. Also, it could mean that the driver files are not installed.

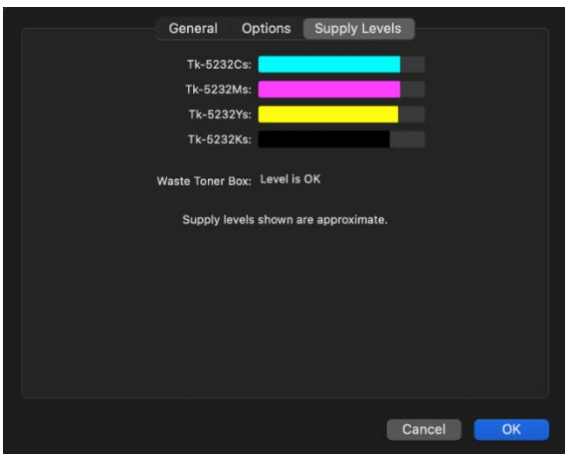
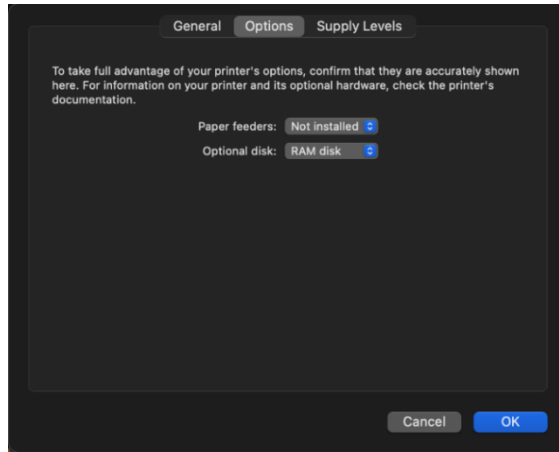
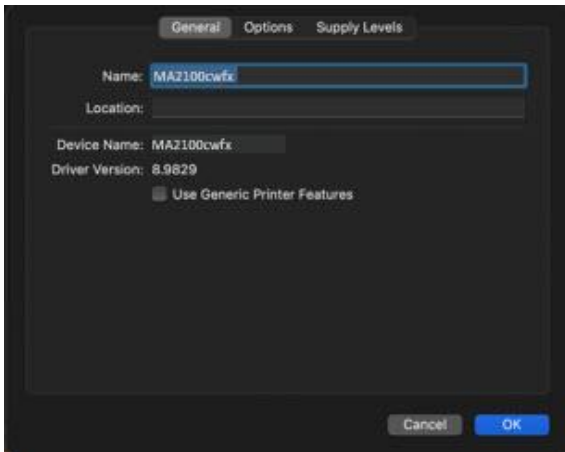
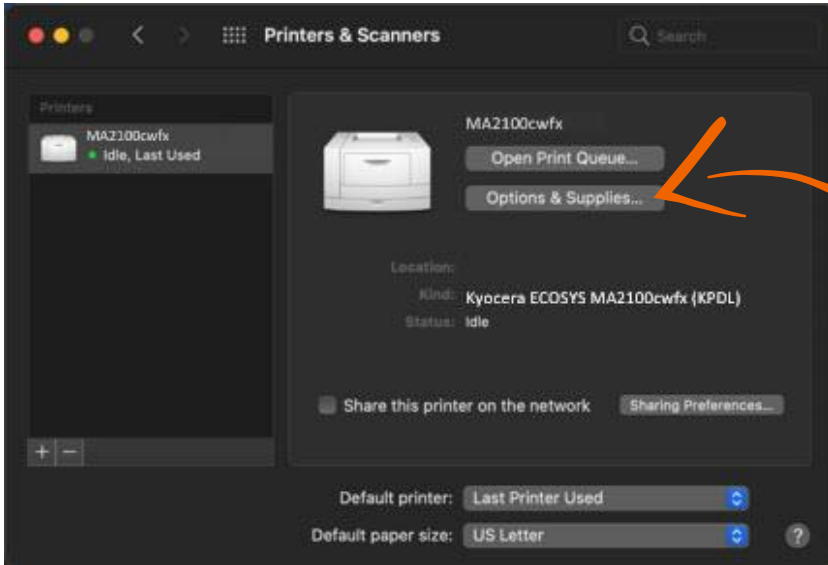
Verify the correct model number with KDPL in parenthesis is in the "Use" box.

Change the name if you don't want just the IP as the name. Location is optional also.

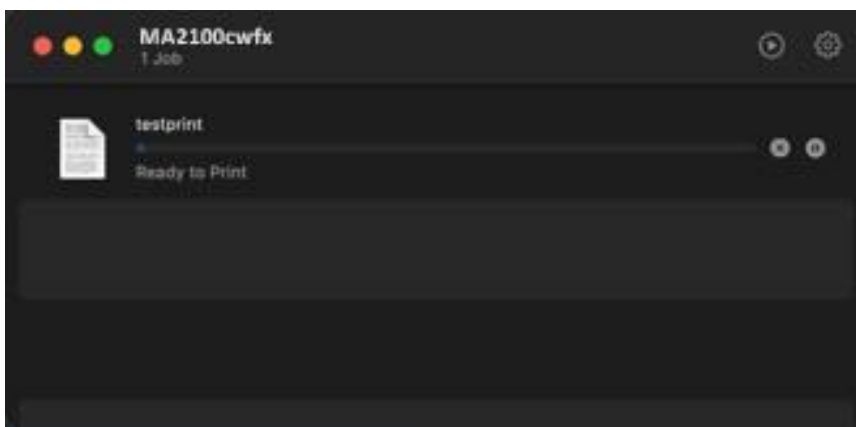
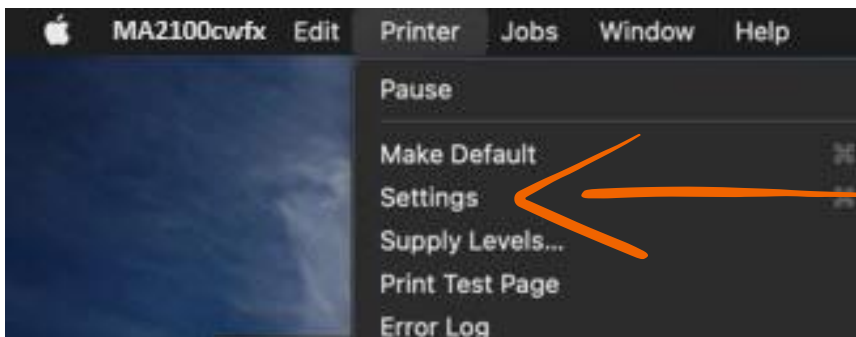
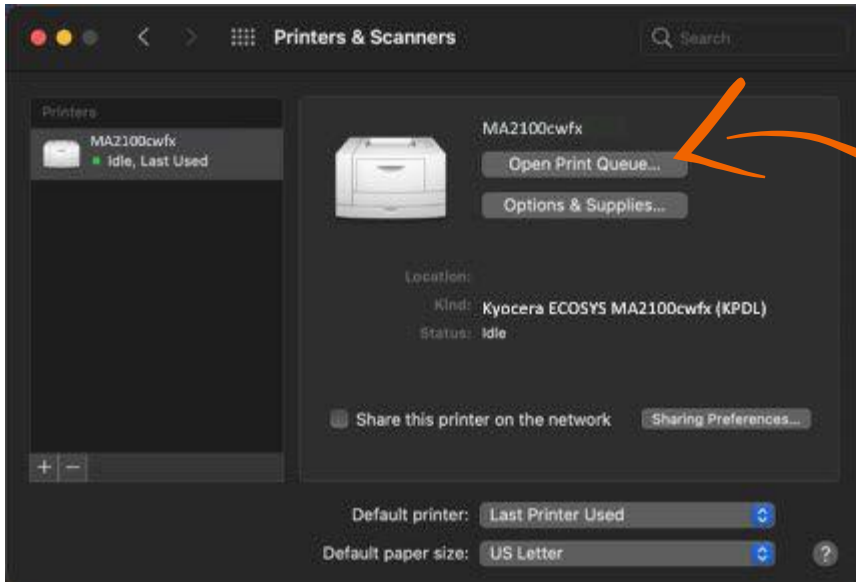


After any one of the previous install procedures, it leads us to this screen. The printer has been installed. Here you can verify the PPD and the Options.

Press options and supplies, in the General tab you can change the name or location and check the version of the driver in the options tab you can change the installed options Supply levels will show current status of toner and waste toner.



From this area you can also print a test page. Select open print queue, the print spooler dialog will open, from the top menu on computer select Printer then print test page. A test page will be sent to the printer.



Installing Kyocera Quick Scan Utility for USB and network connected devices

(Windows PC only)

Download/Install

Download the Kyocera Quick scan utility from <https://www.kyoceradocumentsolutions.us/ma2100cwfx>


Click on support and select download center.




Enter the MA2100cwfx in the field and press blue down arrow.

Select software and find the Kyocera Quick Scan Utility.

ECOSYS M552lcdn

Drivers Documents **Software**

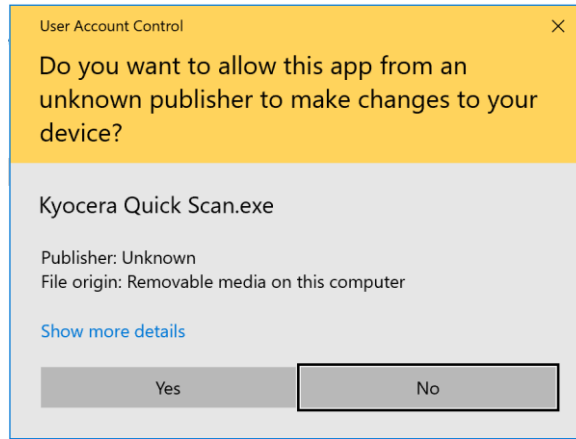
Select language: **All** 

Setup Tool (3.1.6211)	7 MB ZIP	
Kyocera Net Viewer (6.2.1426)	116 MB ZIP	
Kyocera Quick Scan (2.1)	47 MB EXE	

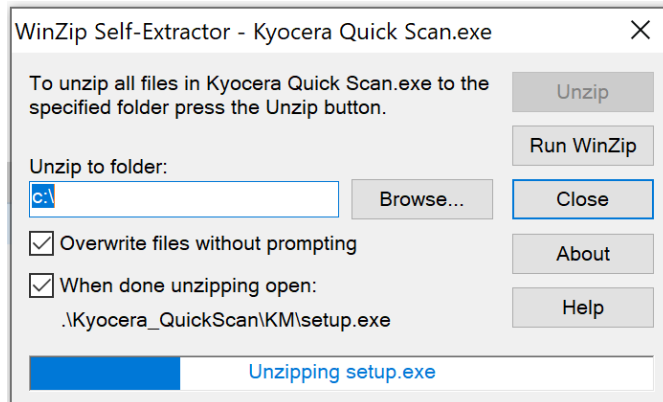
Press the blue download arrow and save it to your download folder.

DoubleClick on:  Kyocera Quick Scan

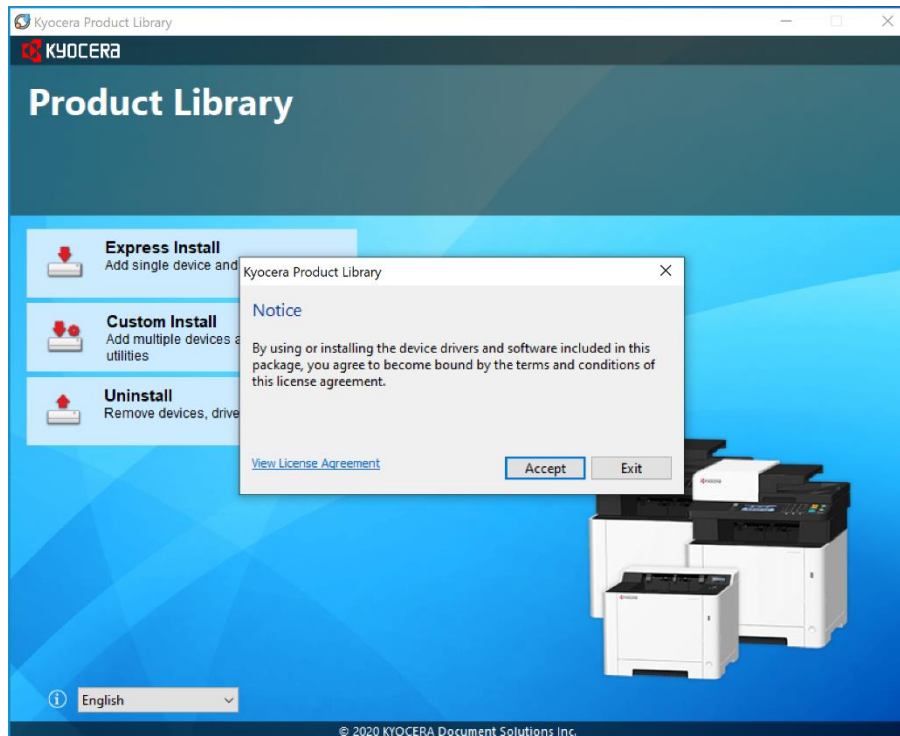
Agree to the User Account Control.



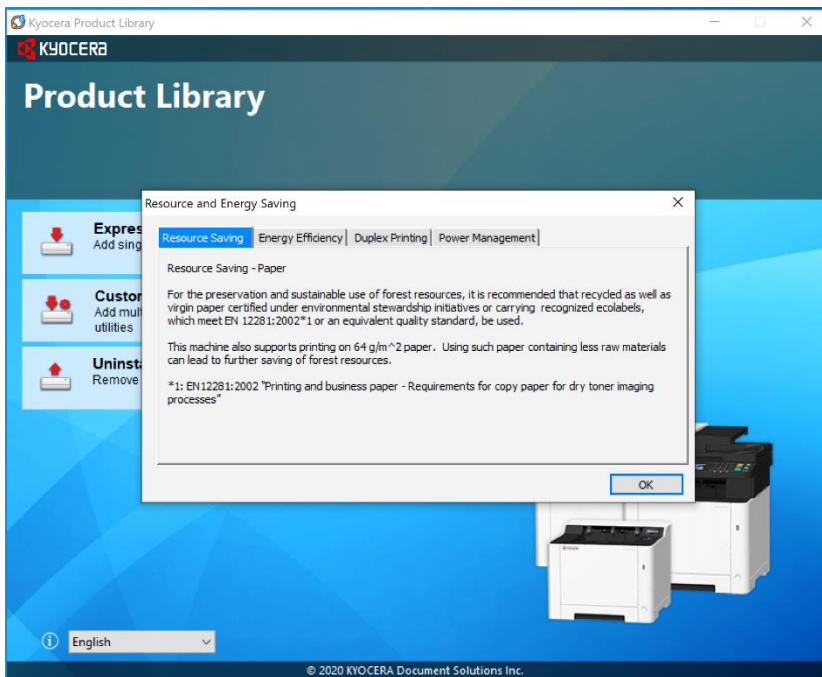
Extraction will start, press next.



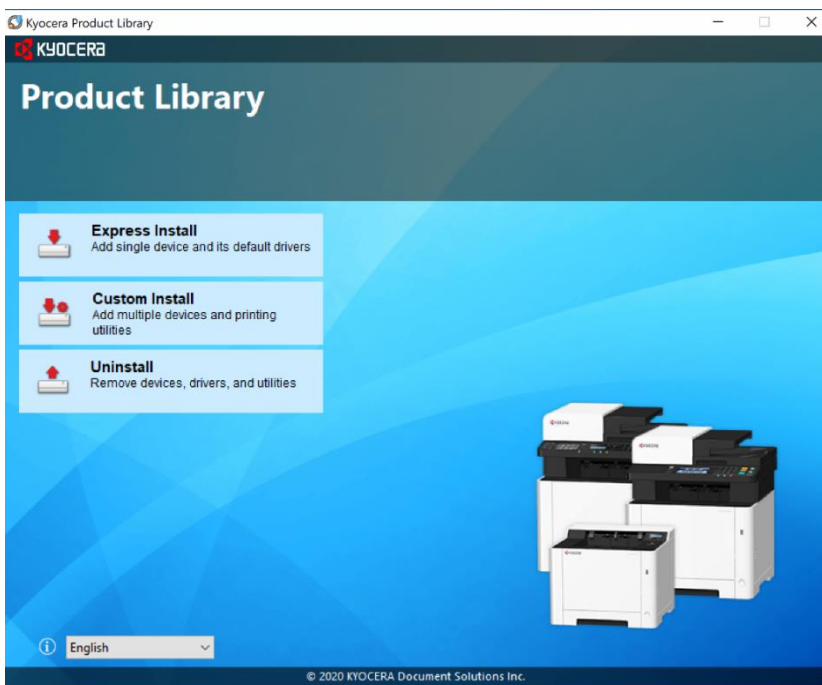
Accept Notice.



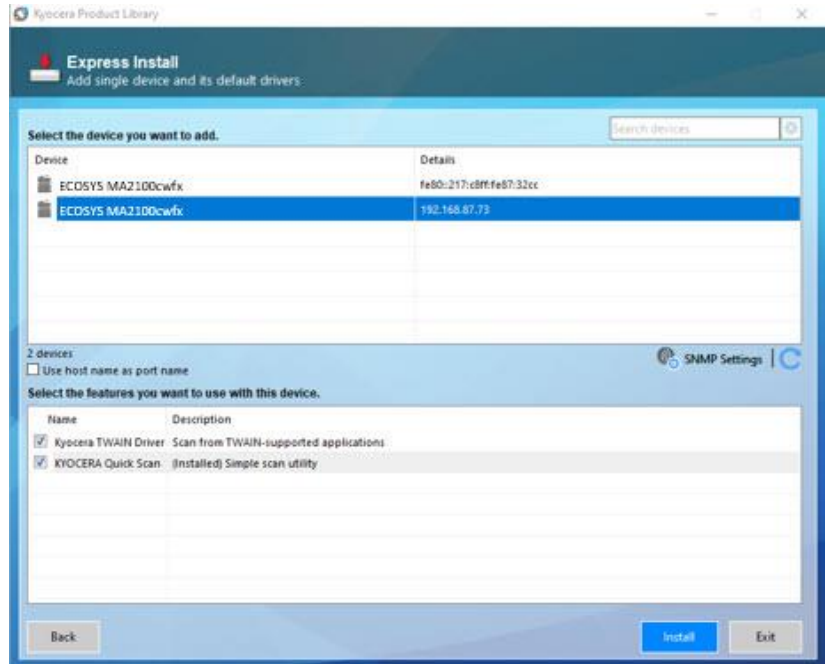
Select Ok at energy saver popup.



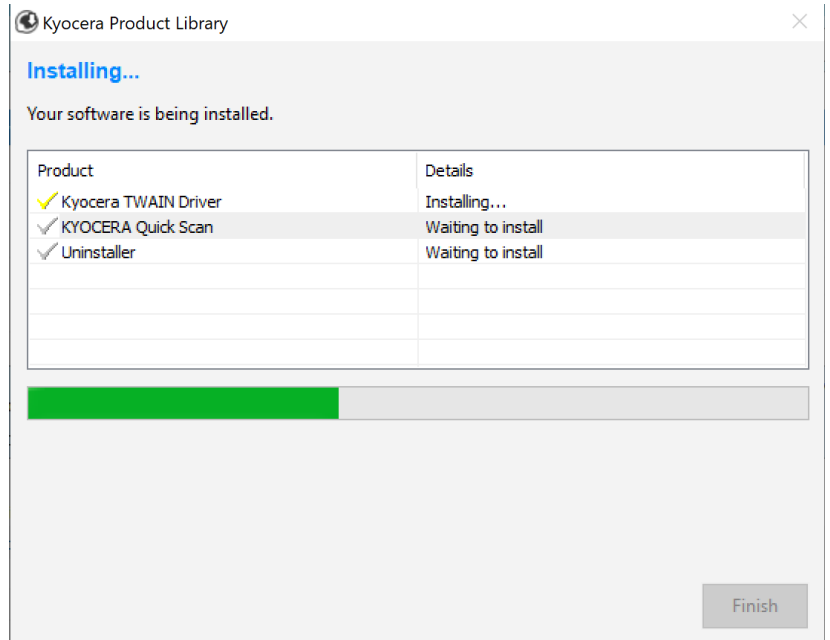
Select Express Install.



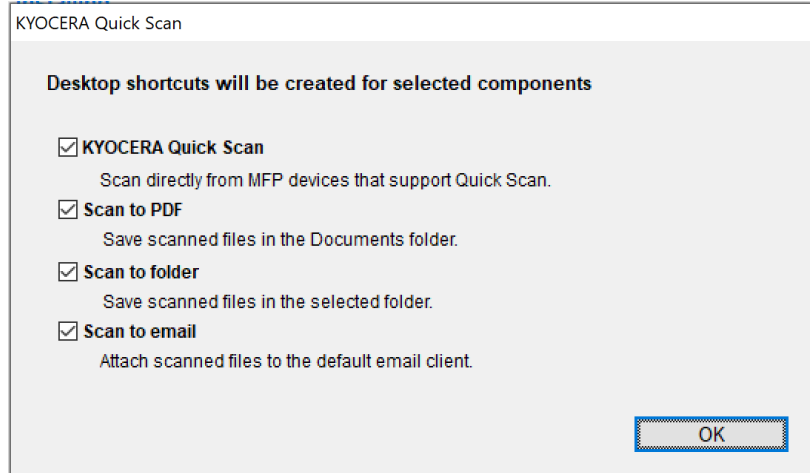
First the utility will discover your device, make sure it is turned on and out of sleep mode.



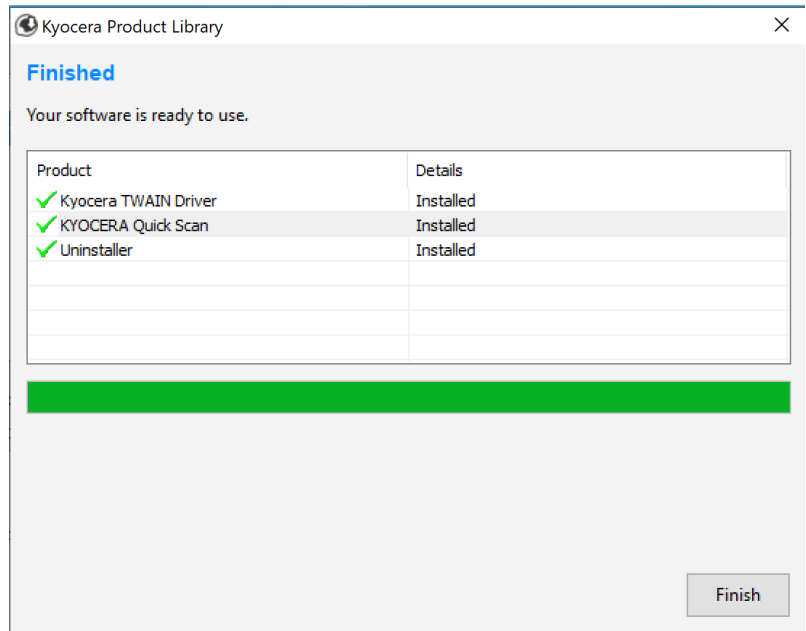
Once your device is found, highlight it and click on Install.



Select which Icons you would like on the desktop. Press Ok.



Select Finish.



Exit out of Installer.

Using Kyocera Quick Scan Utility for USB and network connected device

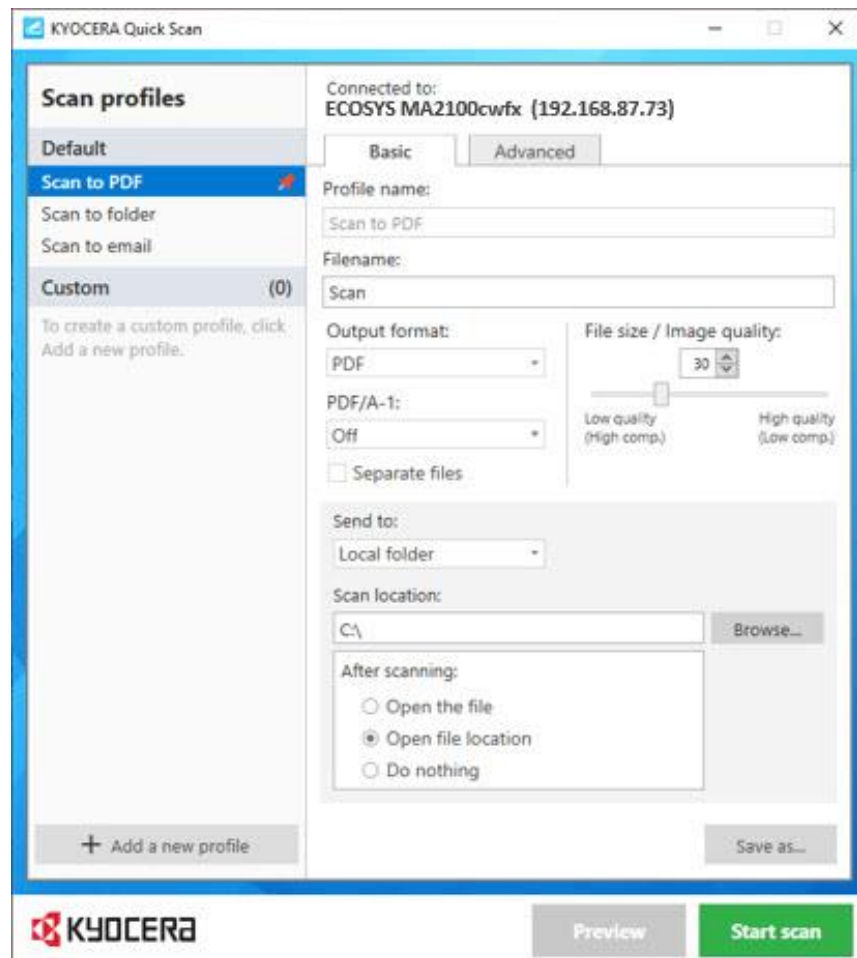
(Windows PC only)

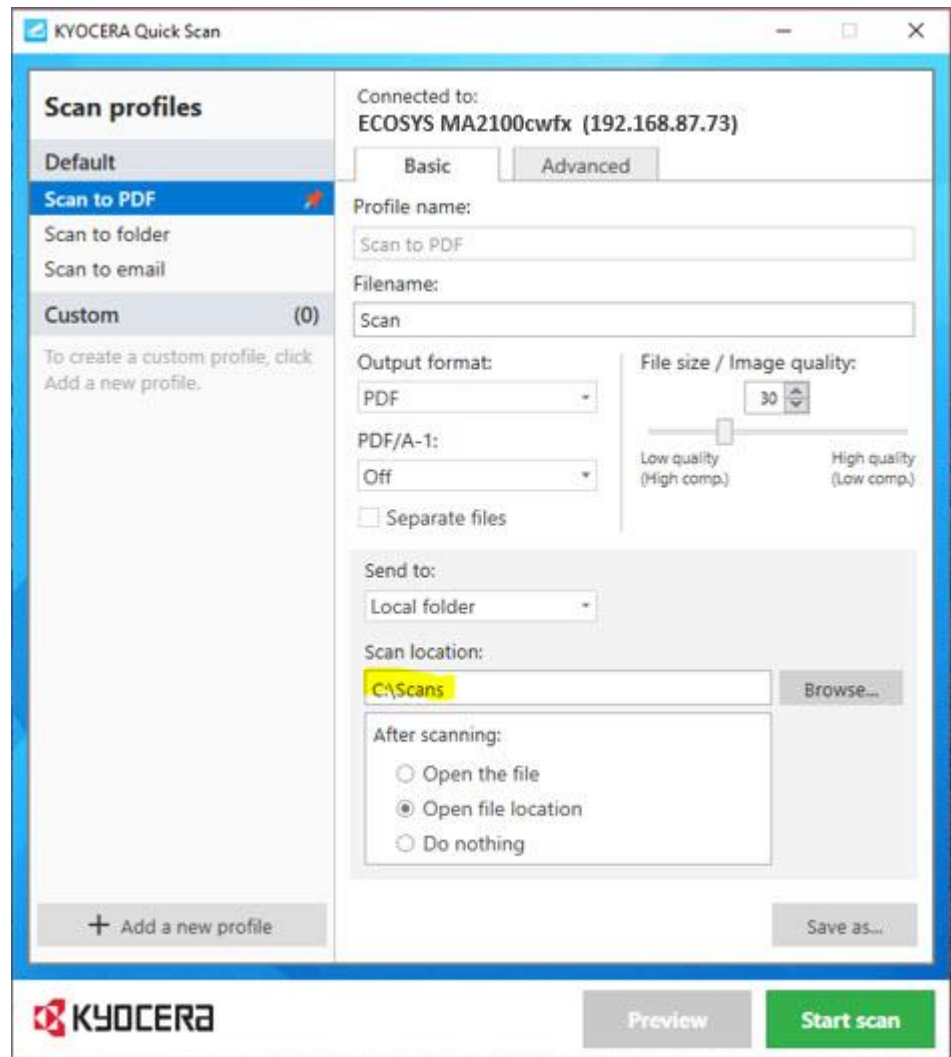
Setup:

To use the Quick Scan utility, Place your original on the Document feeder or glass.

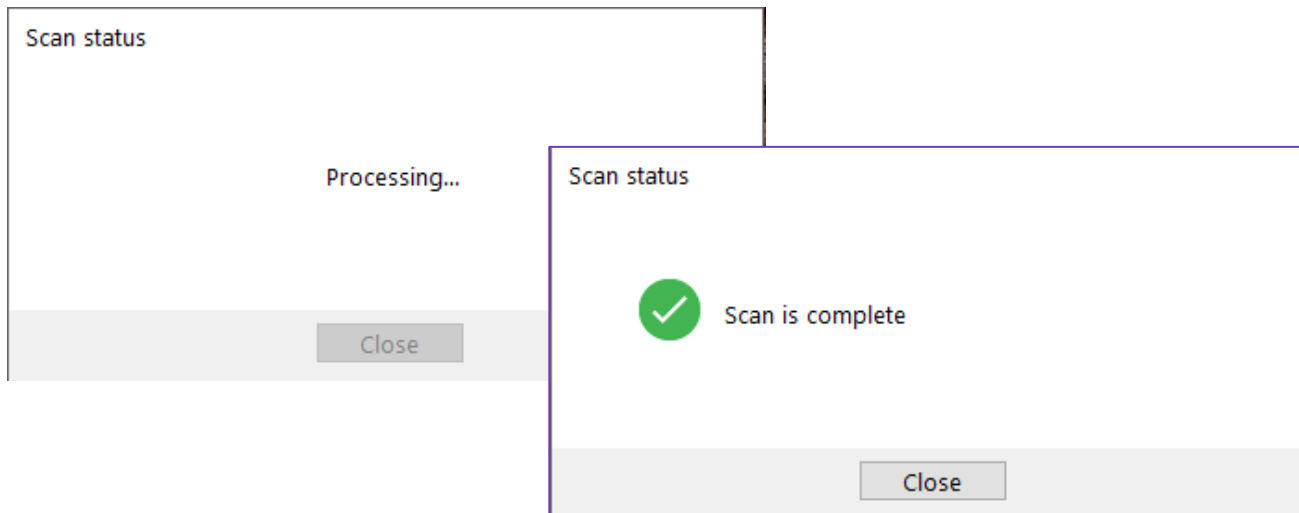
Double click on  your computer.

The Quick scan utility will open.





Press Start Scan. Once complete scan file will be in the folder selected.



Kyocera Document Solutions has championed innovative technology since 1934. We enable our customers to turn information into knowledge, excel at learning and surpass others. With professional expertise and a culture of empathetic partnership, we help organizations put knowledge to work to drive change.

KYOCERA Document Solutions America
225 Sand Road, PO Box 40008,
Fairfield, New Jersey 07004-0008, USA
Tel: 973-808-8444



[kyoceradocumentsolutions.us](https://www.kyoceradocumentsolutions.us)