

Installation Environment

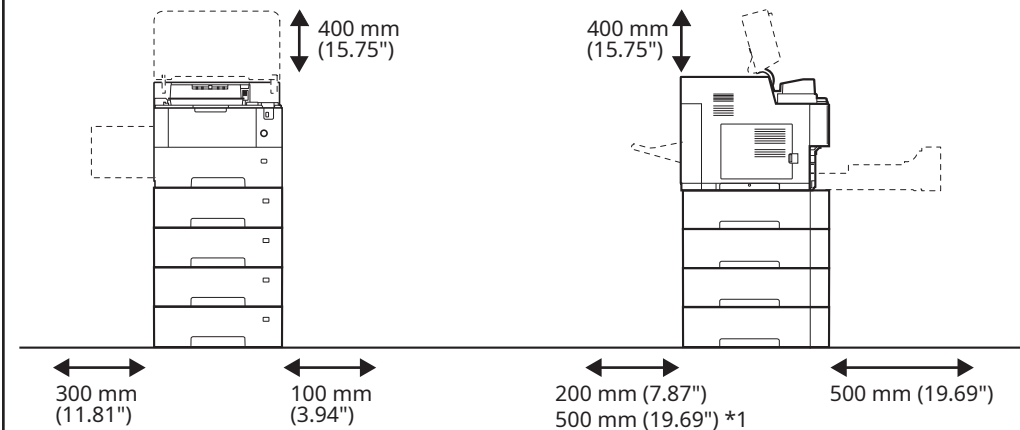
Kyocera Recommends selecting the Location for the printer as follows:

1. Room Temperature range: 50 to 90.5°F
2. Humidity Level: 10 to 80%
3. Power: 120 V Specification Model:
A dedicated 120VAC 60Hz 15A outlet
230 V Specification Model:
A dedicated 200-240VAC 50/60Hz 15A outlet

Avoid the following locations when selecting a site for the machine.
Adverse environmental conditions may affect the image quality.

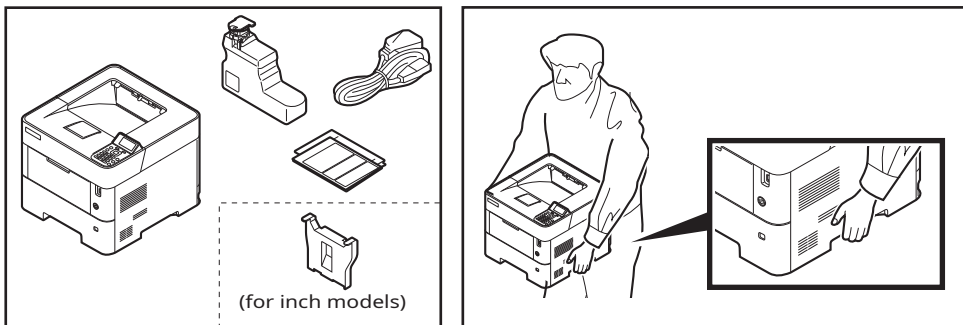
- + Avoid locations near a window or with exposure to direct sunlight.
- + Avoid locations with vibrations.
- + Avoid locations with rapid temperature fluctuations.
- + Avoid locations with direct exposure to hot or cold air.
- + Avoid poorly ventilated locations.

Recommended Installation Space

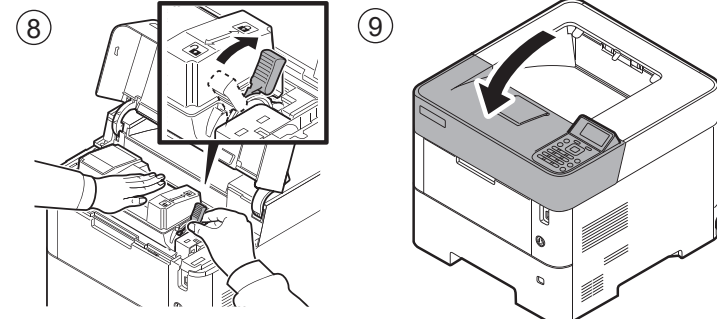
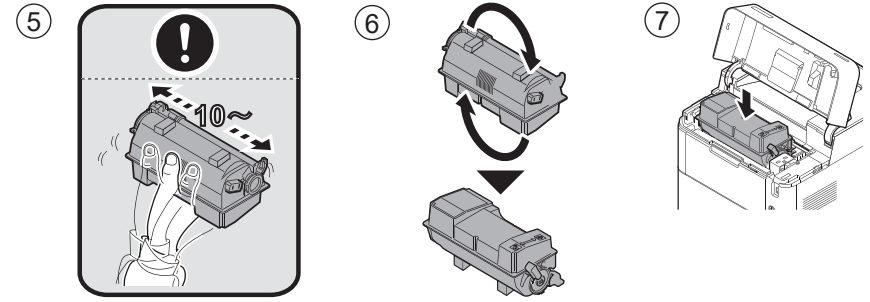
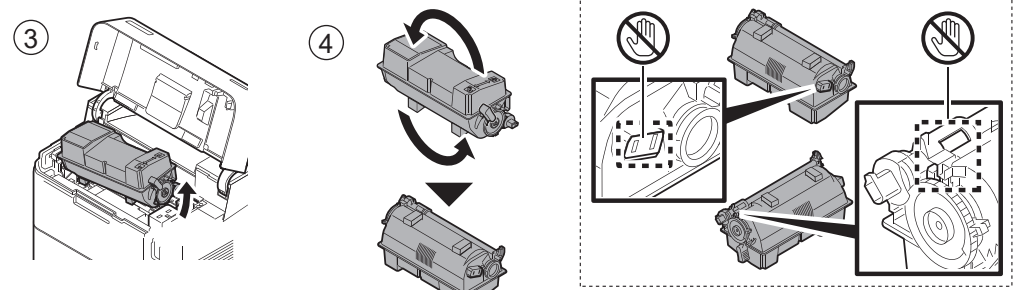
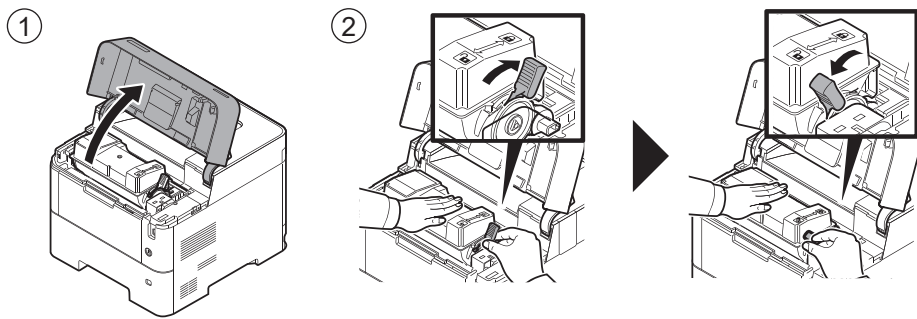


Step 1 Setting up the Printer

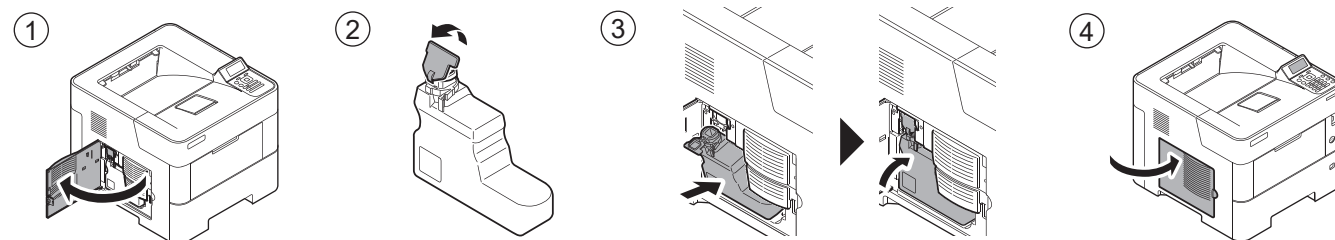
- 1 Open the Box. Remove the machine carefully from the box grasping both sides.
- 2 Lift the main unit from the handles by cardboard handles.



- 3 Open the top cover. After Removing the packing material, shake and install the toner container. Close the top cover.

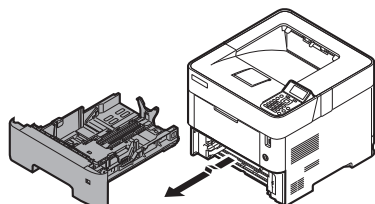


Step 2 Install Waste toner box

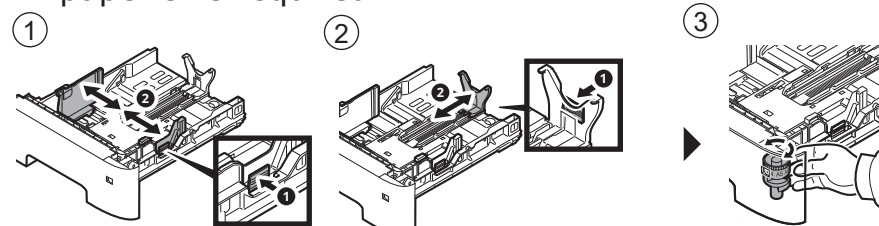


Step 3 Loading Paper

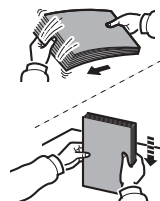
- 1 Pull the Cassette 1 completely out of the machine.



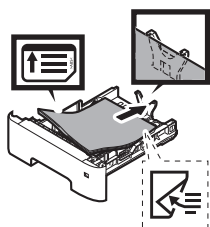
- 2 Adjust the paper length and width guide to the paper size required.



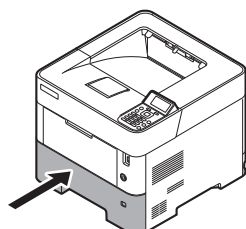
- 3 Fan the paper, then tap it on a level surface.



- 4 Load paper.



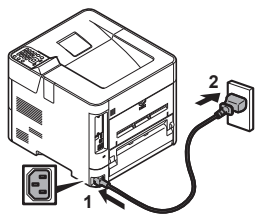
- 5 Gently push the Cassette 1 back in.



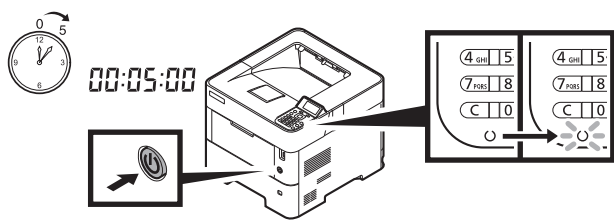
- + Set print side face-up.
- + No bent or folder edges in the paper. Such paper may cause paper jams.
- + Set the quantity of the paper less than the maximum paper indication on the side or the cassette.
- + If the paper is loaded without adjusting the paper length guide and the paper width guides, skewed paper feeding, and a paper jam will occur.

Step 4 Powering on the Printer

1 Connect the power cord to the rear of the machine and the other end to the power outlet.

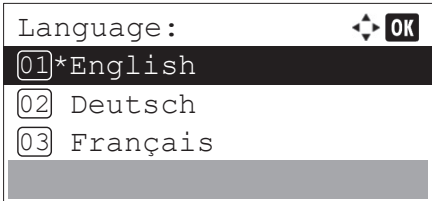


2 Turn the power switch ON at the front of the printer.

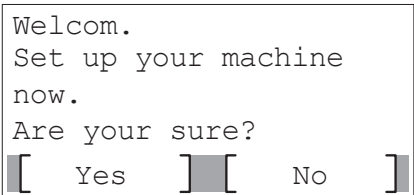


Step 5 Default Settings of the Machine

1 Press [◀] [▶] key to select default language > [OK] key.

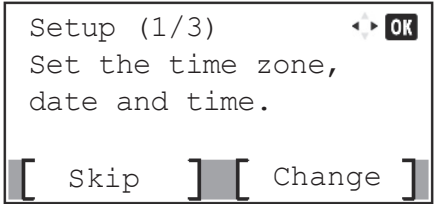


2 Select [Yes].



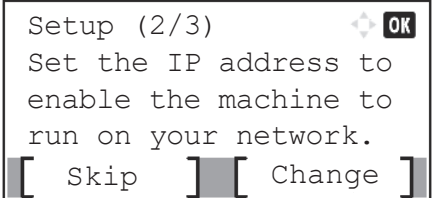
The setup screen appears.

3 Select [Change] when you change the time zone, date and time. Follow the instructions on the screen. If not, select [Skip].



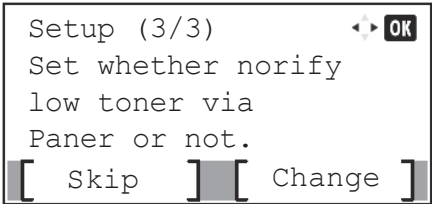
The screen moves to the next step.

4 Select [Change] when you set the IP address to use the machine on the network. Follow the instructions on the screen. If you set it later, select [Skip].

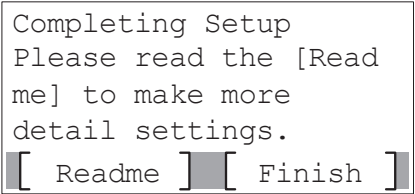


The screen moves to the next step.

5 Select [Change] when you set whether notify low toner via panel or not. If you set it later, select [Skip].



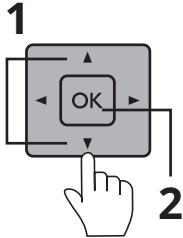
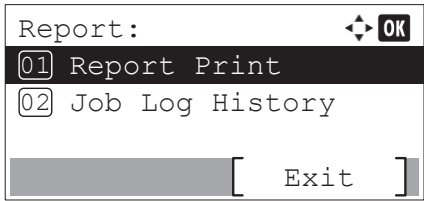
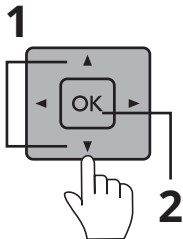
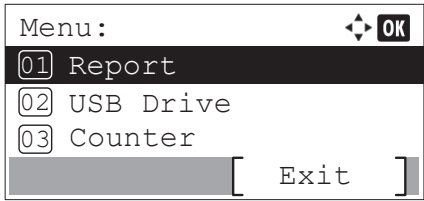
6 When the following screen appears, select [Finish].



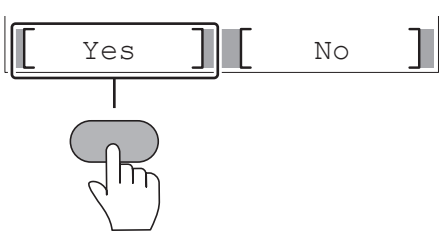
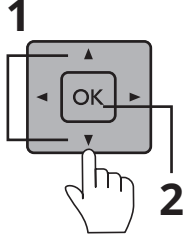
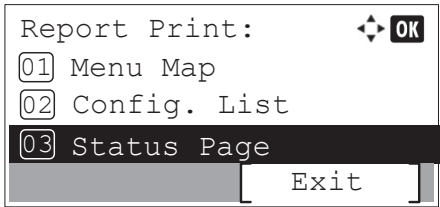
NOTE
Prepare the device and information according to the your environment. For details of the network settings, refer to the Operation Guide.

Step 6 Printing a Status Page

1 [Menu] key > [▲] [▼] key > [Report] > [OK] key > [▲] [▼] key > [Report Print] > [OK] key



2 [▲] [▼] key > [Status Page] > [OK] key > [Yes]



Step 7 Installing Software

Access the following URL and select your model and OS.
Download Center: <https://kyocera.info/>

For Windows
Download and run the Web Installer and follow the on-screen instructions to install the driver and software.



For Mac
Download and run the driver and follow the on-screen instructions to install.

